



March 16, 2026

IGI Report Number **LG781623565**

HEART BRILLIANT

LABORATORY GROWN DIAMOND

6.05 X 6.17 X 3.65 MM

Carat Weight **0.79 CARAT**

Color Grade **FANCY VIVID BLUE**

Clarity Grade **VS 1**

Polish **EXCELLENT**

Symmetry **VERY GOOD**

Fluorescence **NONE**

Inscription(s) **IGI LG781623565**

Comments: This Laboratory Grown Diamond was created by Chemical Vapor Deposition (CVD) growth process. Indications of post-growth treatment.

LABORATORY GROWN DIAMOND REPORT

March 16, 2026

IGI Report Number

LG781623565

Description

LABORATORY GROWN DIAMOND

Shape and Cutting Style

HEART BRILLIANT

Measurements

6.05 X 6.17 X 3.65 MM

GRADING RESULTS

Carat Weight

0.79 CARAT

Color Grade

FANCY VIVID BLUE

Clarity Grade

VS 1

ADDITIONAL GRADING INFORMATION

Polish

EXCELLENT

Symmetry

VERY GOOD

Fluorescence

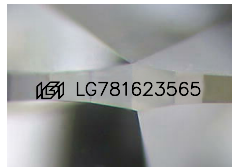
NONE

Inscription(s)

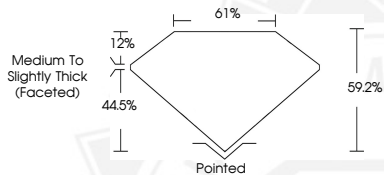
IGI LG781623565

Comments: This Laboratory Grown Diamond was created by Chemical Vapor Deposition (CVD) growth process.

Indications of post-growth treatment.



Sample Image Used



March 16, 2026

IGI Report Number **LG781623565**

HEART BRILLIANT

LABORATORY GROWN DIAMOND

6.05 X 6.17 X 3.65 MM

Carat Weight **0.79 CARAT**

Color Grade **FANCY VIVID BLUE**

Clarity Grade **VS 1**

Polish **EXCELLENT**

Symmetry **VERY GOOD**

Fluorescence **NONE**

Inscription(s) **IGI LG781623565**

Comments: This Laboratory Grown Diamond was created by Chemical Vapor Deposition (CVD) growth process. Indications of post-growth treatment.



THIS DOCUMENT WAS PRODUCED WITH THE FOLLOWING SECURITY MEASURES: SPECIAL DOCUMENT PAPER, INK SCREENS, WATERMARK, BACKGROUND DESIGNS, HOLOGRAM AND OTHER SECURITY FEATURES NOT LISTED AND DO EXCEED DOCUMENT SECURITY INDUSTRY GUIDELINES.