



ELECTRONIC COPY

LG781629328
Report verification at igi.org

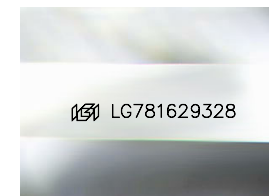


March 20, 2026
IGI Report Number **LG781629328**
Description **LABORATORY GROWN DIAMOND**
Shape and Cutting Style **CUT CORNERED
RECTANGULAR MODIFIED
BRILLIANT**

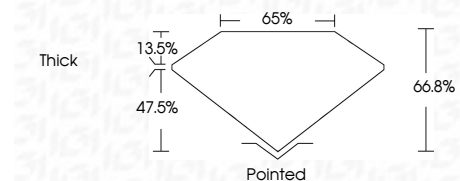
Measurements **14.21 X 9.41 X 6.29 MM**

GRADING RESULTS

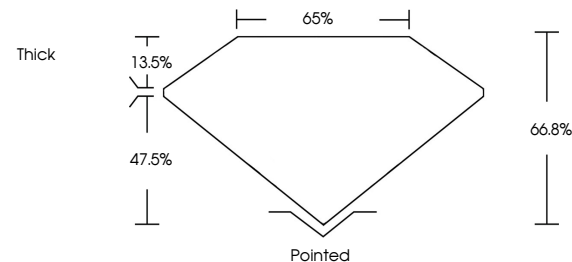
Carat Weight **7.47 CARATS**
Color Grade **G**
Clarity Grade **VVS 2**



Sample Image Used



PROPORTIONS



COLOR

D E F G H I J Faint Very Light Light

CLARITY

FL	IF	VVS ¹⁻²	VS ¹⁻²	SI ¹⁻²	I ¹⁻³
Flawless	Internally Flawless	Very Very Slightly Included	Very Slightly Included	Slightly Included	Included

ADDITIONAL GRADING INFORMATION

Polish **EXCELLENT**
Symmetry **EXCELLENT**
Fluorescence **NONE**
Inscription(s) **IGI LG781629328**
Comments: This Laboratory Grown Diamond was created by Chemical Vapor Deposition (CVD) growth process. Type IIa



March 20, 2026
IGI Report No LG781629328
CUT CORNERED RECT. MODIFIED BRILLIANT
14.21 X 9.41 X 6.29 MM
7.47 CARATS
G
VVS 2
66.8%
65%
Thick
Pointed
EXCELLENT
EXCELLENT
NONE
IGI LG781629328
Comments: This Laboratory Grown Diamond was created by Chemical Vapor Deposition (CVD) growth process. Type IIa