



ELECTRONIC COPY

LG781631829 Report verification at igi.org



March 28, 2026 IGI Report Number LG781631829 Description LABORATORY GROWN DIAMOND Shape and Cutting Style CUT CORNERED RECTANGULAR MODIFIED BRILLIANT Measurements 8.66 X 6.17 X 4.12 MM GRADING RESULTS Carat Weight 1.92 CARAT Color Grade D Clarity Grade VVS 2

March 28, 2026 IGI Report Number LG781631829 Description LABORATORY GROWN DIAMOND Shape and Cutting Style CUT CORNERED RECTANGULAR MODIFIED BRILLIANT Measurements 8.66 X 6.17 X 4.12 MM

GRADING RESULTS

Carat Weight 1.92 CARAT Color Grade D Clarity Grade VVS 2

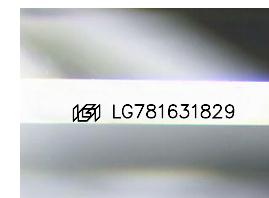
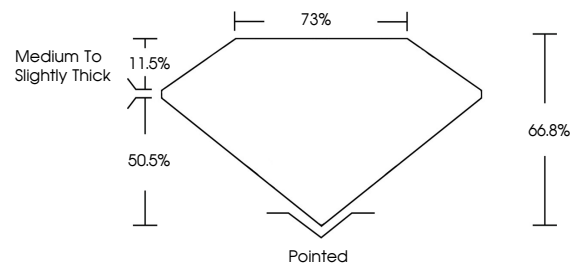
ADDITIONAL GRADING INFORMATION

Polish EXCELLENT Symmetry EXCELLENT Fluorescence NONE

Inscription(s) IGI LG781631829

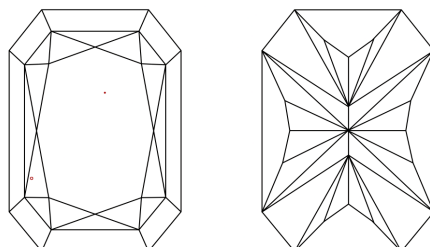
Comments: This Laboratory Grown Diamond was created by Chemical Vapor Deposition (CVD) growth process. Type IIa

PROPORTIONS



Sample Image Used

CLARITY CHARACTERISTICS



KEY TO SYMBOLS

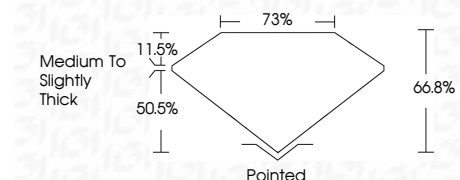
Red symbols indicate internal characteristics. Green symbols indicate external characteristics.

COLOR

D E F G H I J Faint Very Light Light

CLARITY

FL IF VVS 1-2 VS 1-2 SI 1-2 I 1-3 Flawless Internally Flawless Very Very Slightly Included Very Slightly Included Slightly Included Included



ADDITIONAL GRADING INFORMATION

Polish EXCELLENT Symmetry EXCELLENT Fluorescence NONE Inscription(s) IGI LG781631829 Comments: This Laboratory Grown Diamond was created by Chemical Vapor Deposition (CVD) growth process. Type IIa



March 28, 2026 IGI Report No LG781631829 CUT CORNERED RECT. MODIFIED BRILLIANT 1.92 CARAT D 8.66 X 6.17 X 4.12 MM 66.8% 73% Medium to Slightly Thick Pointed EXCELLENT EXCELLENT NONE NONE IGI LG781631829 Comments: This Laboratory Grown Diamond was created by Chemical Vapor Deposition (CVD) growth process. Type IIa