



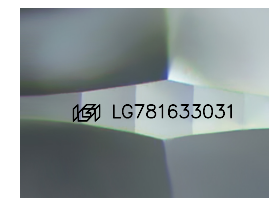
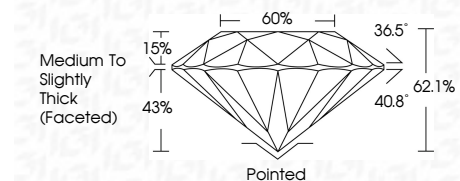
ELECTRONIC COPY

LG781633031 Report verification at igi.org



April 1, 2026 IGI Report Number LG781633031 Description LABORATORY GROWN DIAMOND Shape and Cutting Style ROUND BRILLIANT Measurements 6.34 - 6.41 X 3.96 MM

GRADING RESULTS Carat Weight 1.01 CARAT Color Grade E Clarity Grade VS 2 Cut Grade EXCELLENT



Sample Image Used

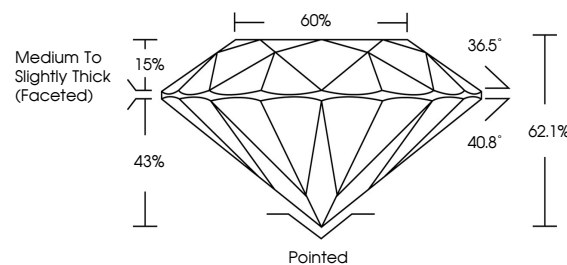
ADDITIONAL GRADING INFORMATION Polish EXCELLENT Symmetry EXCELLENT Fluorescence NONE Inscription(s) LG781633031 Comments: As Grown - No indication of post-growth treatment. This Laboratory Grown Diamond was created by High Pressure High Temperature (HPHT) growth process. Type II



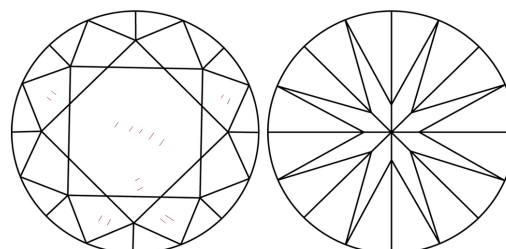
April 1, 2026 IGI Report No LG781633031 ROUND BRILLIANT 6.34 - 6.41 X 3.96 MM 1.01 CARAT E VS 2 EXCELLENT 62.1% 60% Medium To Slightly Thick (Faceted) Pointed EXCELLENT EXCELLENT NONE NONE LG781633031

Comments: As Grown - No indication of post-growth treatment. This Laboratory Grown Diamond was created by High Pressure High Temperature (HPHT) growth process. Type II

PROPORTIONS



CLARITY CHARACTERISTICS



KEY TO SYMBOLS

Red symbols indicate internal characteristics. Green symbols indicate external characteristics.

COLOR

D E F G H I J Faint Very Light Light

CLARITY

FL IF VS 1-2 VS 1-2 SI 1-2 I 1-3 Flawless Internally Flawless Very Very Slightly Included Very Slightly Included Slightly Included Included

