



**ELECTRONIC COPY**

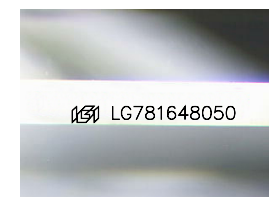
LG781648050  
Report verification at igi.org



March 12, 2026  
IGI Report Number **LG781648050**  
Description **LABORATORY GROWN DIAMOND**  
Shape and Cutting Style **EMERALD CUT**  
Measurements **7.62 X 5.13 X 3.37 MM**

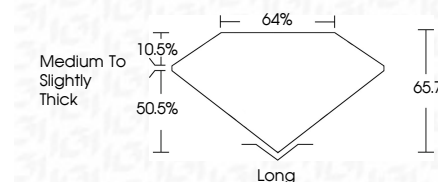
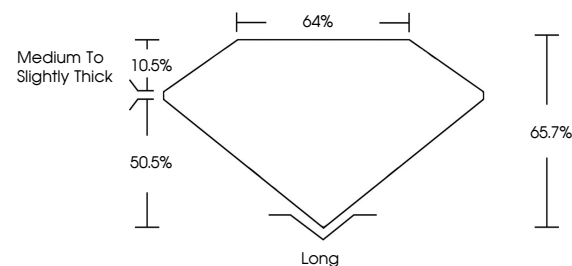
**GRADING RESULTS**

Carat Weight **1.28 CARAT**  
Color Grade **E**  
Clarity Grade **VS 1**



Sample Image Used

**PROPORTIONS**



**ADDITIONAL GRADING INFORMATION**

Polish **EXCELLENT**  
Symmetry **VERY GOOD**  
Fluorescence **NONE**  
Inscription(s) **IGI LG781648050**  
Comments: This Laboratory Grown Diamond was created by Chemical Vapor Deposition (CVD) growth process. Type IIa



**IGI**

**COLOR**

D E F G H I J Faint Very Light Light

**CLARITY**

FL	IF	VS <sup>1-2</sup>	VS <sup>1-2</sup>	SI <sup>1-2</sup>	I <sup>1-3</sup>
Flawless	Internally Flawless	Very Very Slightly Included	Very Slightly Included	Slightly Included	Included



March 12, 2026  
IGI Report No **LG781648050**  
**EMERALD CUT**  
7.62 X 5.13 X 3.37 MM  
Carat Weight **1.28 CARAT**  
Color Grade **E**  
Clarity Grade **VS 1**  
Depth **65.7%**  
Table **64%**  
Girdle **Medium to Slightly Thick**  
Culet **Long**  
Polish **EXCELLENT**  
Symmetry **VERY GOOD**  
Fluorescence **NONE**  
Inscription(s) **IGI LG781648050**

Comments: This Laboratory Grown Diamond was created by Chemical Vapor Deposition (CVD) growth process. Type IIa