



ELECTRONIC COPY

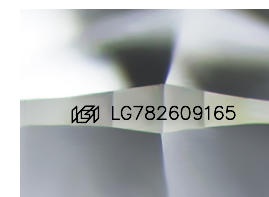
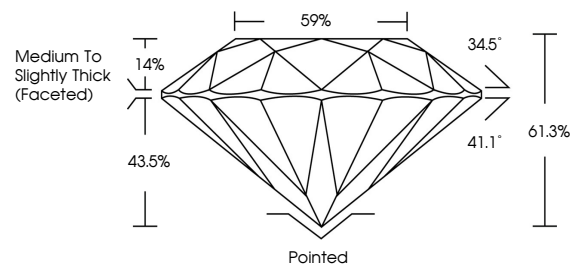
LG782609165
Report verification at igi.org



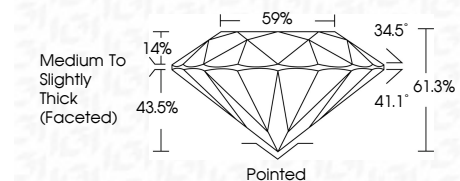
March 12, 2026
IGI Report Number LG782609165
Description LABORATORY GROWN DIAMOND
Shape and Cutting Style ROUND BRILLIANT
Measurements 7.46 - 7.50 X 4.59 MM
GRADING RESULTS
Carat Weight 1.58 CARAT
Color Grade F
Clarity Grade VVS 1
Cut Grade IDEAL

March 12, 2026
IGI Report Number LG782609165
Description LABORATORY GROWN DIAMOND
Shape and Cutting Style ROUND BRILLIANT
Measurements 7.46 - 7.50 X 4.59 MM
GRADING RESULTS
Carat Weight 1.58 CARAT
Color Grade F
Clarity Grade VVS 1
Cut Grade IDEAL

PROPORTIONS



Sample Image Used



ADDITIONAL GRADING INFORMATION

Polish EXCELLENT
Symmetry EXCELLENT
Fluorescence NONE
Inscription(s) IGI LG782609165

Comments: This Laboratory Grown Diamond was created by Chemical Vapor Deposition (CVD) growth process. Type IIa

COLOR

D E F G H I J Faint Very Light Light

CLARITY

FL IF VS 1-2 VS 2-3 SI 1-2 I 1-3
Flawless Internally Flawless Very Very Slightly Included Very Slightly Included Slightly Included Included

ADDITIONAL GRADING INFORMATION

Polish EXCELLENT
Symmetry EXCELLENT
Fluorescence NONE
Inscription(s) IGI LG782609165
Comments: This Laboratory Grown Diamond was created by Chemical Vapor Deposition (CVD) growth process. Type IIa



Certified SUSTAINABILITY RATED DIAMOND. All certified diamonds come with an individual certificate, ONLY available at an accredited retailer. SCS GLOBAL SERVICES. FOR THE SUSTAINABILITY RATED CERTIFICATE, SCAN HERE -> [QR code]

March 12, 2026
IGI Report No LG782609165
ROUND BRILLIANT
7.46 - 7.50 X 4.59 MM
1.58 CARAT
Color Grade F
Clarity Grade VVS 1
Cut Grade IDEAL
Depth 61.3%
Table 59%
Medium To Slightly Thick (Faceted)
Pointed
Polish EXCELLENT
Symmetry EXCELLENT
Fluorescence NONE
Inscription(s) IGI LG782609165
Comments: This Laboratory Grown Diamond was created by Chemical Vapor Deposition (CVD) growth process. Type IIa