



ELECTRONIC COPY

LG782621998
Report verification at igi.org



March 18, 2026
IGI Report Number **LG782621998**
Description **LABORATORY GROWN DIAMOND**
Shape and Cutting Style **ROUND BRILLIANT**
Measurements **7.65 - 7.70 X 4.34 MM**
GRADING RESULTS
Carat Weight **1.56 CARAT**
Color Grade **J**
Clarity Grade **VS 1**
Cut Grade **VERY GOOD**

March 18, 2026
IGI Report Number **LG782621998**
Description **LABORATORY GROWN DIAMOND**
Shape and Cutting Style **ROUND BRILLIANT**
Measurements **7.65 - 7.70 X 4.34 MM**

GRADING RESULTS

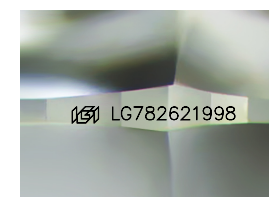
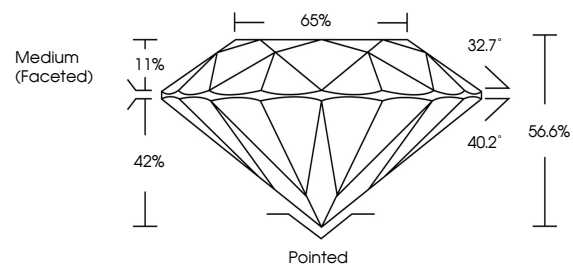
Carat Weight **1.56 CARAT**
Color Grade **J**
Clarity Grade **VS 1**
Cut Grade **VERY GOOD**

ADDITIONAL GRADING INFORMATION

Polish **VERY GOOD**
Symmetry **VERY GOOD**
Fluorescence **NONE**
Inscription(s) **IGI LG782621998**

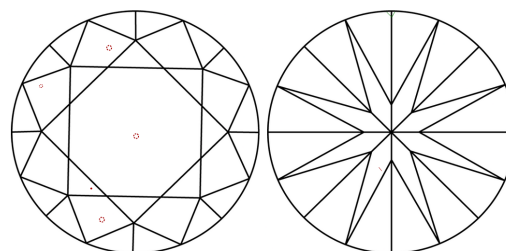
Comments: This Laboratory Grown Diamond was created by Chemical Vapor Deposition (CVD) growth process.
Type IIa

PROPORTIONS



Sample Image Used

CLARITY CHARACTERISTICS



KEY TO SYMBOLS

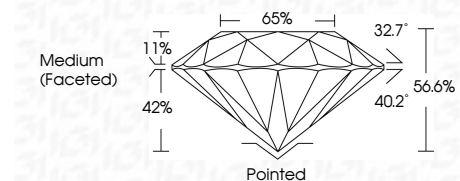
Red symbols indicate internal characteristics.
Green symbols indicate external characteristics.

COLOR

D E F G H I J Faint Very Light Light

CLARITY

FL	IF	VS ¹⁻²	VS ¹⁻²	SI ¹⁻²	I ¹⁻³
Flawless	Internally Flawless	Very Very Slightly Included	Very Slightly Included	Slightly Included	Included



ADDITIONAL GRADING INFORMATION

Polish **VERY GOOD**
Symmetry **VERY GOOD**
Fluorescence **NONE**
Inscription(s) **IGI LG782621998**
Comments: This Laboratory Grown Diamond was created by Chemical Vapor Deposition (CVD) growth process.
Type IIa



March 18, 2026
IGI Report No LG782621998
ROUND BRILLIANT
7.65 - 7.70 X 4.34 MM
1.56 CARAT
J
Color Grade
VERY GOOD
VS 1
Depth
56.6%
Table
65%
Medium (Faceted)
Cut
Pointed
Polish
VERY GOOD
Symmetry
VERY GOOD
Fluorescence
NONE
Inscription(s)
IGI LG782621998
Comments: This Laboratory Grown Diamond was created by Chemical Vapor Deposition (CVD) growth process.
Type IIa