



**ELECTRONIC COPY**

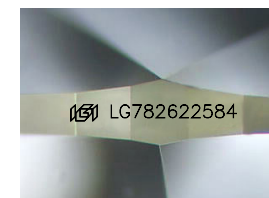
LG782622584  
Report verification at igi.org



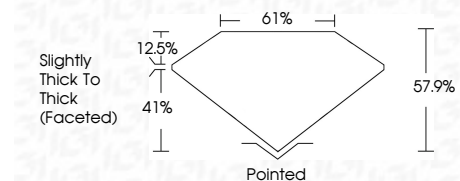
March 24, 2026  
IGI Report Number **LG782622584**  
Description **LABORATORY GROWN DIAMOND**  
Shape and Cutting Style **HEART BRILLIANT**  
Measurements **7.63 X 9.29 X 5.38 MM**

**GRADING RESULTS**

Carat Weight **2.31 CARATS**  
Color Grade **E**  
Clarity Grade **VS 2**



Sample Image Used



**ADDITIONAL GRADING INFORMATION**

Polish **VERY GOOD**  
Symmetry **VERY GOOD**  
Fluorescence **NONE**  
Inscription(s) **IGI LG782622584**  
Comments: This Laboratory Grown Diamond was created by Chemical Vapor Deposition (CVD) growth process. Type IIa



March 24, 2026  
IGI Report No LG782622584  
**HEART BRILLIANT**  
7.63 X 9.29 X 5.38 MM  
2.31 CARATS  
E  
VS 2  
57.9%  
41%  
Slightly Thick To Thick (Faceted)  
Pointed  
VERY GOOD  
VERY GOOD  
NONE  
IGI LG782622584  
Comments: This Laboratory Grown Diamond was created by Chemical Vapor Deposition (CVD) growth process. Type IIa

March 24, 2026  
IGI Report Number **LG782622584**  
Description **LABORATORY GROWN DIAMOND**  
Shape and Cutting Style **HEART BRILLIANT**  
Measurements **7.63 X 9.29 X 5.38 MM**

**GRADING RESULTS**

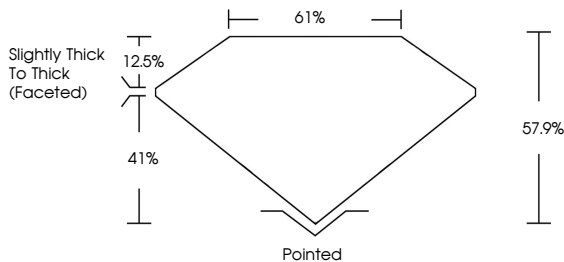
Carat Weight **2.31 CARATS**  
Color Grade **E**  
Clarity Grade **VS 2**

**ADDITIONAL GRADING INFORMATION**

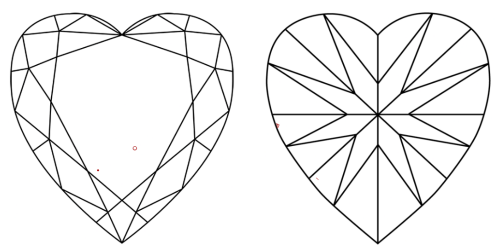
Polish **VERY GOOD**  
Symmetry **VERY GOOD**  
Fluorescence **NONE**  
Inscription(s) **IGI LG782622584**

Comments: This Laboratory Grown Diamond was created by Chemical Vapor Deposition (CVD) growth process. Type IIa

**PROPORTIONS**



**CLARITY CHARACTERISTICS**



**KEY TO SYMBOLS**

Red symbols indicate internal characteristics.  
Green symbols indicate external characteristics.

**COLOR**

D	E	F	G	H	I	J	Faint	Very Light	Light
---	---	---	---	---	---	---	-------	------------	-------

**CLARITY**

FL	IF	VS <sup>1-2</sup>	VS <sup>1-2</sup>	SI <sup>1-2</sup>	I <sup>1-3</sup>
Flawless	Internally Flawless	Very Very Slightly Included	Very Slightly Included	Slightly Included	Included

