



**ELECTRONIC COPY**

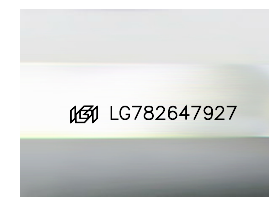
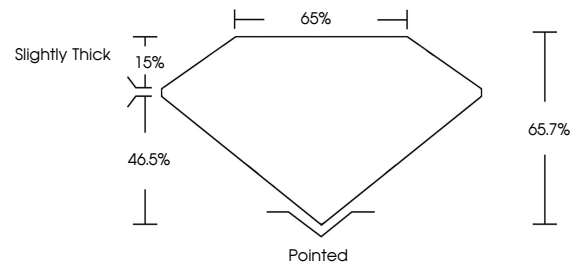
LG782647927  
Report verification at igi.org



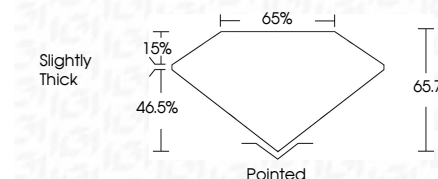
March 19, 2026  
IGI Report Number **LG782647927**  
Description **LABORATORY GROWN DIAMOND**  
Shape and Cutting Style **CUT CORNERED  
RECTANGULAR MODIFIED  
BRILLIANT**  
Measurements **9.89 X 6.93 X 4.55 MM**  
**GRADING RESULTS**  
Carat Weight **2.79 CARATS**  
Color Grade **FANCY VIVID PINK**  
Clarity Grade **SI 2**

March 19, 2026  
IGI Report Number **LG782647927**  
Description **LABORATORY GROWN DIAMOND**  
Shape and Cutting Style **CUT CORNERED RECTANGULAR  
MODIFIED BRILLIANT**  
Measurements **9.89 X 6.93 X 4.55 MM**  
**GRADING RESULTS**  
Carat Weight **2.79 CARATS**  
Color Grade **FANCY VIVID PINK**  
Clarity Grade **SI 2**

**PROPORTIONS**



Sample Image Used



**ADDITIONAL GRADING INFORMATION**

Polish **EXCELLENT**  
Symmetry **EXCELLENT**  
Fluorescence **SLIGHT**  
Inscription(s) **IGI LG782647927**

Comments: This Laboratory Grown Diamond was created by Chemical Vapor Deposition (CVD) growth process. Indications of post-growth treatment.

**COLOR**

D E F G H I J Faint Very Light Light

**CLARITY**

FL	IF	VS <sup>1-2</sup>	VS <sup>1-2</sup>	SI <sup>1-2</sup>	I <sup>1-3</sup>
Flawless	Internally Flawless	Very Very Slightly Included	Very Slightly Included	Slightly Included	Included

**ADDITIONAL GRADING INFORMATION**

Polish **EXCELLENT**  
Symmetry **EXCELLENT**  
Fluorescence **SLIGHT**  
Inscription(s) **IGI LG782647927**  
Comments: This Laboratory Grown Diamond was created by Chemical Vapor Deposition (CVD) growth process. Indications of post-growth treatment.



**IGI**



March 19, 2026  
IGI Report No **LG782647927**  
**CUT CORNERED RECT. MODIFIED BRILLIANT**  
**9.89 X 6.93 X 4.55 MM**  
Carat Weight **2.79 CARATS**  
Color Grade **FANCY VIVID PINK**  
Clarity Grade **SI 2**  
Depth **65.7%**  
Table **65%**  
Girdle **Slightly Thick**  
Culet **Pointed**  
Polish **EXCELLENT**  
Symmetry **EXCELLENT**  
Fluorescence **SLIGHT**  
Inscription(s) **IGI LG782647927**

Comments: This Laboratory Grown Diamond was created by Chemical Vapor Deposition (CVD) growth process. Indications of post-growth treatment.