



**INTERNATIONAL  
GEMOLOGICAL  
INSTITUTE**

**ELECTRONIC COPY**



May 5, 2026

**IGI Report Number** LG782651069  
**ROUND BRILLIANT**  
**LABORATORY GROWN DIAMOND**  
**6.21 - 6.26 X 3.78 MM**

**Carat Weight** 0.90 CARAT  
**Color Grade** FANCY VIVID PINK  
**Clarity Grade** VS 1  
**Cut Grade** EXCELLENT  
**Polish** EXCELLENT  
**Symmetry** EXCELLENT  
**Fluorescence** SLIGHT  
**Inscription(s)** IGI LG782651069

Comments: This Laboratory Grown Diamond was created by Chemical Vapor Deposition (CVD) growth process. Indications of post-growth treatment.

**LABORATORY GROWN DIAMOND REPORT**

May 5, 2026  
IGI Report Number **LG782651069**  
Description **LABORATORY GROWN DIAMOND**  
Shape and Cutting Style **ROUND BRILLIANT**  
Measurements **6.21 - 6.26 X 3.78 MM**

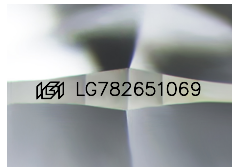
**GRADING RESULTS**

**Carat Weight** 0.90 CARAT  
**Color Grade** FANCY VIVID PINK  
**Clarity Grade** VS 1  
**Cut Grade** EXCELLENT

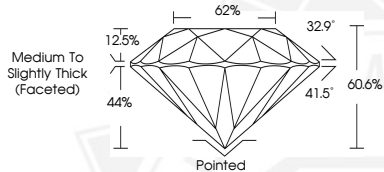
**ADDITIONAL GRADING INFORMATION**

**Polish** EXCELLENT  
**Symmetry** EXCELLENT  
**Fluorescence** SLIGHT  
**Inscription(s)** IGI LG782651069

Comments: This Laboratory Grown Diamond was created by Chemical Vapor Deposition (CVD) growth process. Indications of post-growth treatment.



Sample Image Used



May 5, 2026

**IGI Report Number** LG782651069  
**ROUND BRILLIANT**  
**LABORATORY GROWN DIAMOND**  
**6.21 - 6.26 X 3.78 MM**

**Carat Weight** 0.90 CARAT  
**Color Grade** FANCY VIVID PINK  
**Clarity Grade** VS 1  
**Cut Grade** EXCELLENT  
**Polish** EXCELLENT  
**Symmetry** EXCELLENT  
**Fluorescence** SLIGHT  
**Inscription(s)** IGI LG782651069

Comments: This Laboratory Grown Diamond was created by Chemical Vapor Deposition (CVD) growth process. Indications of post-growth treatment.



THIS DOCUMENT WAS PRODUCED WITH THE FOLLOWING SECURITY MEASURES: SPECIAL DOCUMENT PAPER, INK SCREENS, WATERMARK, BACKGROUND DESIGNS, HOLOGRAM AND OTHER SECURITY FEATURES NOT LISTED AND DO EXCEED DOCUMENT SECURITY INDUSTRY GUIDELINES.

For terms & conditions and to verify this report, please visit [www.igi.org](http://www.igi.org)