



April 6, 2026

**IGI Report Number LG782654837**  
**CUT CORNERED RECTANGULAR  
MODIFIED BRILLIANT  
LABORATORY GROWN DIAMOND**  
**5.84 X 3.87 X 2.62 MM**

Carat Weight **0.51 CARAT**  
Color Grade **E**  
Clarity Grade **VVS 2**  
Polish **VERY GOOD**  
Symmetry **GOOD**  
Fluorescence **NONE**  
Inscription(s) **IGI LG782654837**

Comments: This Laboratory Grown Diamond was created by Chemical Vapor Deposition (CVD) growth process. Type IIa

**LABORATORY GROWN DIAMOND REPORT**

April 6, 2026  
IGI Report Number **LG782654837**  
Description **LABORATORY GROWN DIAMOND**  
Shape and Cutting Style **CUT CORNERED RECTANGULAR MODIFIED  
BRILLIANT**  
Measurements **5.84 X 3.87 X 2.62 MM**

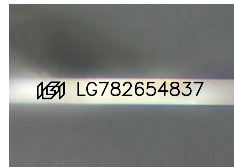
**GRADING RESULTS**

Carat Weight **0.51 CARAT**  
Color Grade **E**  
Clarity Grade **VVS 2**

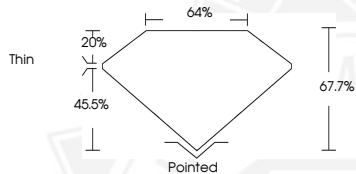
**ADDITIONAL GRADING INFORMATION**

Polish **VERY GOOD**  
Symmetry **GOOD**  
Fluorescence **NONE**  
Inscription(s) **IGI LG782654837**

Comments: This Laboratory Grown Diamond was created by Chemical Vapor Deposition (CVD) growth process. Type IIa



Sample Image Used



April 6, 2026

**IGI Report Number LG782654837**  
**CUT CORNERED RECTANGULAR  
MODIFIED BRILLIANT  
LABORATORY GROWN DIAMOND**  
**5.84 X 3.87 X 2.62 MM**

Carat Weight **0.51 CARAT**  
Color Grade **E**  
Clarity Grade **VVS 2**  
Polish **VERY GOOD**  
Symmetry **GOOD**  
Fluorescence **NONE**  
Inscription(s) **IGI LG782654837**

Comments: This Laboratory Grown Diamond was created by Chemical Vapor Deposition (CVD) growth process. Type IIa



THIS DOCUMENT WAS PRODUCED WITH THE FOLLOWING SECURITY MEASURES: SPECIAL DOCUMENT PAPER, INK SCREENS, WATERMARK, BACKGROUND DESIGNS, HOLOGRAM AND OTHER SECURITY FEATURES NOT LISTED AND DO EXCEED DOCUMENT SECURITY INDUSTRY GUIDELINES.