



March 19, 2026

IGI Report Number **LG782659594**

HEART BRILLIANT
LABORATORY GROWN DIAMOND
5.48 X 6.06 X 3.65 MM
Carat Weight **0.70 CARAT**
Color Grade **FANCY VIVID BLUE**
Clarity Grade **VVS 2**
Polish **EXCELLENT**
Symmetry **EXCELLENT**
Fluorescence **NONE**
Inscription(s) **IGI LG782659594**

Comments: This Laboratory Grown Diamond was created by Chemical Vapor Deposition (CVD) growth process. Indications of post-growth treatment.

LABORATORY GROWN DIAMOND REPORT

March 19, 2026
IGI Report Number **LG782659594**
Description **LABORATORY GROWN DIAMOND**
Shape and Cutting Style **HEART BRILLIANT**
Measurements **5.48 X 6.06 X 3.65 MM**

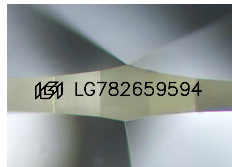
GRADING RESULTS

Carat Weight **0.70 CARAT**
Color Grade **FANCY VIVID BLUE**
Clarity Grade **VVS 2**

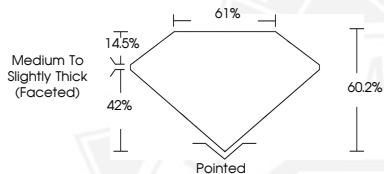
ADDITIONAL GRADING INFORMATION

Polish **EXCELLENT**
Symmetry **EXCELLENT**
Fluorescence **NONE**
Inscription(s) **IGI LG782659594**

Comments: This Laboratory Grown Diamond was created by Chemical Vapor Deposition (CVD) growth process. Indications of post-growth treatment.



Sample Image Used



March 19, 2026

IGI Report Number **LG782659594**

HEART BRILLIANT
LABORATORY GROWN DIAMOND
5.48 X 6.06 X 3.65 MM
Carat Weight **0.70 CARAT**
Color Grade **FANCY VIVID BLUE**
Clarity Grade **VVS 2**
Polish **EXCELLENT**
Symmetry **EXCELLENT**
Fluorescence **NONE**
Inscription(s) **IGI LG782659594**

Comments: This Laboratory Grown Diamond was created by Chemical Vapor Deposition (CVD) growth process. Indications of post-growth treatment.



THIS DOCUMENT WAS PRODUCED WITH THE FOLLOWING SECURITY MEASURES: SPECIAL DOCUMENT PAPER, INK SCREENS, WATERMARK, BACKGROUND DESIGNS, HOLOGRAM AND OTHER SECURITY FEATURES NOT LISTED AND DO EXCEED DOCUMENT SECURITY INDUSTRY GUIDELINES.