



**LABORATORY GROWN DIAMOND REPORT**

March 27, 2026  
 IGI Report Number **LG782659703**  
 Description **LABORATORY GROWN DIAMOND**  
 Shape and Cutting Style **PRINCESS CUT**  
 Measurements **4.09 X 3.92 X 2.97 MM**

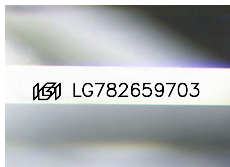
**GRADING RESULTS**

Carat Weight **0.41 CARAT**  
 Color Grade **I**  
 Clarity Grade **VVS 2**

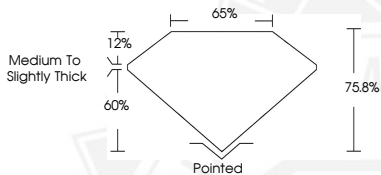
**ADDITIONAL GRADING INFORMATION**

Polish **VERY GOOD**  
 Symmetry **VERY GOOD**  
 Fluorescence **NONE**  
 Inscription(s) **IGI LG782659703**

Comments: This Laboratory Grown Diamond was created by Chemical Vapor Deposition (CVD) growth process. Type IIa



Sample Image Used



March 27, 2026  
 IGI Report Number **LG782659703**  
**PRINCESS CUT**  
**LABORATORY GROWN DIAMOND**  
**4.09 X 3.92 X 2.97 MM**  
 Carat Weight **0.41 CARAT**  
 Color Grade **I**  
 Clarity Grade **VVS 2**  
 Polish **VERY GOOD**  
 Symmetry **VERY GOOD**  
 Fluorescence **NONE**  
 Inscription(s) **IGI LG782659703**

Comments: This Laboratory Grown Diamond was created by Chemical Vapor Deposition (CVD) growth process. Type IIa



March 27, 2026  
 IGI Report Number **LG782659703**  
**PRINCESS CUT**  
**LABORATORY GROWN DIAMOND**  
**4.09 X 3.92 X 2.97 MM**  
 Carat Weight **0.41 CARAT**  
 Color Grade **I**  
 Clarity Grade **VVS 2**  
 Polish **VERY GOOD**  
 Symmetry **VERY GOOD**  
 Fluorescence **NONE**  
 Inscription(s) **IGI LG782659703**

Comments: This Laboratory Grown Diamond was created by Chemical Vapor Deposition (CVD) growth process. Type IIa



THIS DOCUMENT WAS PRODUCED WITH THE FOLLOWING SECURITY MEASURES: SPECIAL DOCUMENT PAPER, INK SCREENS, WATERMARK, BACKGROUND DESIGNS, HOLOGRAM AND OTHER SECURITY FEATURES NOT LISTED AND DO EXCEED DOCUMENT SECURITY INDUSTRY GUIDELINES.