



March 16, 2026

**IGI Report Number** LG782685105  
**MARQUISE BRILLIANT**  
**LABORATORY GROWN DIAMOND**  
**8.05 X 3.98 X 2.47 MM**

**0.43 CARAT**  
**D**  
**VS 2**  
**EXCELLENT**  
**EXCELLENT**  
**NONE**  
**IGI LG782685105**

Comments: This Laboratory Grown Diamond was created by Chemical Vapor Deposition (CVD) growth process. Type IIa

**LABORATORY GROWN DIAMOND REPORT**

March 16, 2026  
IGI Report Number **LG782685105**  
Description **LABORATORY GROWN DIAMOND**  
Shape and Cutting Style **MARQUISE BRILLIANT**  
Measurements **8.05 X 3.98 X 2.47 MM**

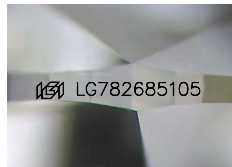
**GRADING RESULTS**

Carat Weight **0.43 CARAT**  
Color Grade **D**  
Clarity Grade **VS 2**

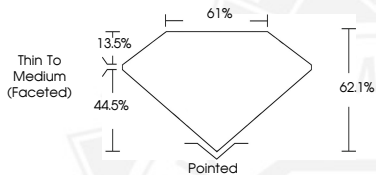
**ADDITIONAL GRADING INFORMATION**

Polish **EXCELLENT**  
Symmetry **EXCELLENT**  
Fluorescence **NONE**  
Inscription(s) **IGI LG782685105**

Comments: This Laboratory Grown Diamond was created by Chemical Vapor Deposition (CVD) growth process. Type IIa



Sample Image Used



March 16, 2026

**IGI Report Number** LG782685105  
**MARQUISE BRILLIANT**  
**LABORATORY GROWN DIAMOND**  
**8.05 X 3.98 X 2.47 MM**

**0.43 CARAT**  
**D**  
**VS 2**  
**EXCELLENT**  
**EXCELLENT**  
**NONE**  
**IGI LG782685105**

Comments: This Laboratory Grown Diamond was created by Chemical Vapor Deposition (CVD) growth process. Type IIa



THIS DOCUMENT WAS PRODUCED WITH THE FOLLOWING SECURITY MEASURES: SPECIAL DOCUMENT PAPER, INK SCREENS, WATERMARK, BACKGROUND DESIGNS, HOLOGRAM AND OTHER SECURITY FEATURES NOT LISTED AND DO EXCEED DOCUMENT SECURITY INDUSTRY GUIDELINES.