



ELECTRONIC COPY

LG782695488
Report verification at igi.org



March 19, 2026
IGI Report Number **LG782695488**
Description **LABORATORY GROWN DIAMOND**
Shape and Cutting Style **CUT CORNERED
RECTANGULAR MODIFIED
BRILLIANT**
Measurements **6.98 X 4.97 X 3.36 MM**
GRADING RESULTS
Carat Weight **1.09 CARAT**
Color Grade **FANCY YELLOW**
Clarity Grade **VVS 2**

March 19, 2026
IGI Report Number **LG782695488**
Description **LABORATORY GROWN DIAMOND**
Shape and Cutting Style **CUT CORNERED RECTANGULAR
MODIFIED BRILLIANT**
Measurements **6.98 X 4.97 X 3.36 MM**

GRADING RESULTS

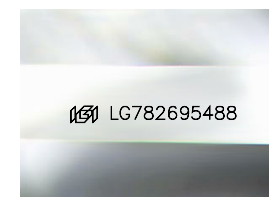
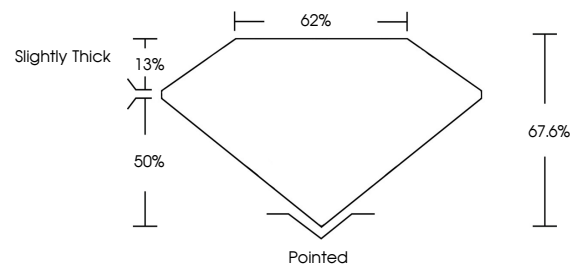
Carat Weight **1.09 CARAT**
Color Grade **FANCY YELLOW**
Clarity Grade **VVS 2**

ADDITIONAL GRADING INFORMATION

Polish **EXCELLENT**
Symmetry **EXCELLENT**
Fluorescence **NONE**
Inscription(s) **IGI LG782695488**

Comments: This Laboratory Grown Diamond was created by Chemical Vapor Deposition (CVD) growth process.

PROPORTIONS



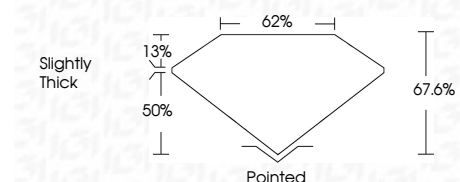
Sample Image Used

COLOR

D E F G H I J Faint Very Light Light

CLARITY

| FL | IF | VVS ¹⁻² | VS ¹⁻² | SI ¹⁻² | I ¹⁻³ |
|----------|---------------------|-----------------------------|------------------------|-------------------|------------------|
| Flawless | Internally Flawless | Very Very Slightly Included | Very Slightly Included | Slightly Included | Included |



ADDITIONAL GRADING INFORMATION

Polish **EXCELLENT**
Symmetry **EXCELLENT**
Fluorescence **NONE**
Inscription(s) **IGI LG782695488**
Comments: This Laboratory Grown Diamond was created by Chemical Vapor Deposition (CVD) growth process.



IGI



March 19, 2026
IGI Report No **LG782695488**
CUT CORNERED RECT. MODIFIED BRILLIANT
6.98 X 4.97 X 3.36 MM
Carat Weight **1.09 CARAT**
Color Grade **FANCY YELLOW**
Clarity Grade **VVS 2**
Table **62%**
Depth **13%**
Girdle **Slightly Thick**
Culet **Pointed**
Polish **EXCELLENT**
Symmetry **EXCELLENT**
Fluorescence **NONE**
Inscription(s) **IGI LG782695488**

Comments: This Laboratory Grown Diamond was created by Chemical Vapor Deposition (CVD) growth process.