



**ELECTRONIC COPY**

LG782695895  
Report verification at igi.org



March 15, 2026

IGI Report Number **LG782695895**

Description **LABORATORY GROWN DIAMOND**

Shape and Cutting Style **ROUND BRILLIANT**

Measurements **9.22 - 9.27 X 5.65 MM**

**GRADING RESULTS**

Carat Weight **3.02 CARATS**

Color Grade **E**

Clarity Grade **VVS 2**

Cut Grade **IDEAL**

March 15, 2026  
IGI Report Number **LG782695895**  
Description **LABORATORY GROWN DIAMOND**  
Shape and Cutting Style **ROUND BRILLIANT**  
Measurements **9.22 - 9.27 X 5.65 MM**

**GRADING RESULTS**

Carat Weight **3.02 CARATS**

Color Grade **E**

Clarity Grade **VVS 2**

Cut Grade **IDEAL**

**ADDITIONAL GRADING INFORMATION**

Polish **EXCELLENT**

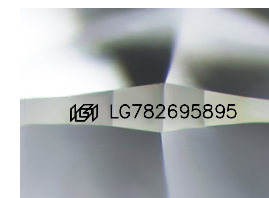
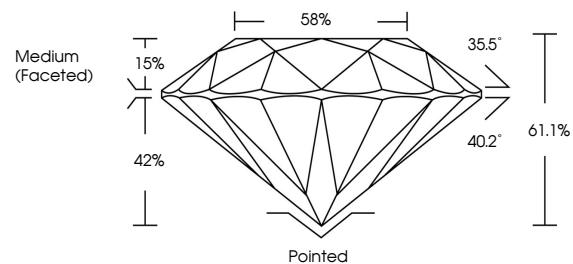
Symmetry **EXCELLENT**

Fluorescence **NONE**

Inscription(s) **LG782695895**

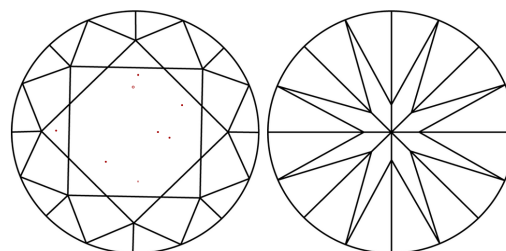
Comments: This Laboratory Grown Diamond was created by Chemical Vapor Deposition (CVD) growth process.  
Type IIa

**PROPORTIONS**



Sample Image Used

**CLARITY CHARACTERISTICS**



**KEY TO SYMBOLS**

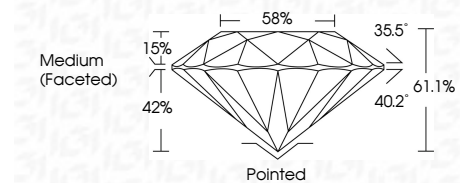
Red symbols indicate internal characteristics.  
Green symbols indicate external characteristics.

**COLOR**

D E F G H I J Faint Very Light Light

**CLARITY**

FL	IF	VVS <sup>1-2</sup>	VS <sup>1-2</sup>	SI <sup>1-2</sup>	I <sup>1-3</sup>
Flawless	Internally Flawless	Very Very Slightly Included	Very Slightly Included	Slightly Included	Included



**ADDITIONAL GRADING INFORMATION**

Polish **EXCELLENT**

Symmetry **EXCELLENT**

Fluorescence **NONE**

Inscription(s) **LG782695895**

Comments: This Laboratory Grown Diamond was created by Chemical Vapor Deposition (CVD) growth process.  
Type IIa



**IGI**



March 15, 2026	IGI Report No <b>LG782695895</b>	<b>3.02 CARATS</b>	<b>E</b>	<b>Pointed</b>	<b>EXCELLENT</b>	<b>EXCELLENT</b>	<b>NONE</b>	<b>None</b>	<b>None</b>	<b>None</b>
<b>9.22 - 9.27 X 5.65 MM</b>	<b>ROUND BRILLIANT</b>	Carat Weight	Color Grade	Clarity Grade	Cut Grade	Depth	Table	Girdle	Medium (Faceted)	Inscriptions(s)
				<b>VVS 2</b>	<b>IDEAL</b>	<b>61.1%</b>	<b>58%</b>			<b>IGI LG782695895</b>
<p>Comments: This Laboratory Grown Diamond was created by Chemical Vapor Deposition (CVD) growth process. Type IIa</p>										