



March 19, 2026

IGI Report Number **LG783601057**

**OVAL BRILLIANT**

**LABORATORY GROWN DIAMOND**

**4.57 X 3.53 X 2.18 MM**

Carat Weight **0.22 CARAT**

Color Grade **E**

Clarity Grade **VVS 1**

Polish **VERY GOOD**

Symmetry **VERY GOOD**

Fluorescence **NONE**

Inscription(s) **IGI LG783601057**

Comments: As Grown - No indication of post-growth treatment. This Laboratory Grown Diamond was created by High Pressure High Temperature (HPHT) growth process. Type II

**LABORATORY GROWN DIAMOND REPORT**

March 19, 2026

IGI Report Number

**LG783601057**

Description

**LABORATORY GROWN DIAMOND**

Shape and Cutting Style

**OVAL BRILLIANT**

Measurements

**4.57 X 3.53 X 2.18 MM**

**GRADING RESULTS**

Carat Weight

**0.22 CARAT**

Color Grade

**E**

Clarity Grade

**VVS 1**

**ADDITIONAL GRADING INFORMATION**

Polish

**VERY GOOD**

Symmetry

**VERY GOOD**

Fluorescence

**NONE**

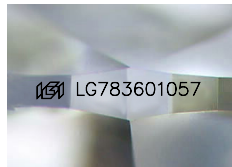
Inscription(s)

**IGI LG783601057**

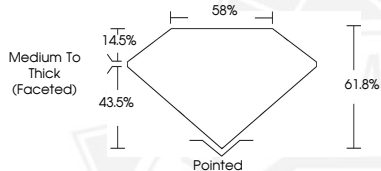
Comments: As Grown - No indication of post-growth treatment.

This Laboratory Grown Diamond was created by High Pressure High Temperature (HPHT) growth process.

Type II



Sample Image Used



March 19, 2026

IGI Report Number **LG783601057**

**OVAL BRILLIANT**

**LABORATORY GROWN DIAMOND**

**4.57 X 3.53 X 2.18 MM**

Carat Weight **0.22 CARAT**

Color Grade **E**

Clarity Grade **VVS 1**

Polish **VERY GOOD**

Symmetry **VERY GOOD**

Fluorescence **NONE**

Inscription(s) **IGI LG783601057**

Comments: As Grown - No indication of post-growth treatment. This Laboratory Grown Diamond was created by High Pressure High Temperature (HPHT) growth process. Type II



THIS DOCUMENT WAS PRODUCED WITH THE FOLLOWING SECURITY MEASURES: SPECIAL DOCUMENT PAPER, INK SCREENS, WATERMARK, BACKGROUND DESIGNS, HOLOGRAM AND OTHER SECURITY FEATURES NOT LISTED AND DO EXCEED DOCUMENT SECURITY INDUSTRY GUIDELINES.