



LABORATORY GROWN DIAMOND REPORT

March 19, 2026
 IGI Report Number **LG783601064**
 Description **LABORATORY GROWN DIAMOND**
 Shape and Cutting Style **OVAL BRILLIANT**
 Measurements **5.57 X 3.82 X 2.38 MM**

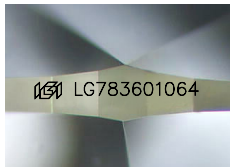
GRADING RESULTS

Carat Weight **0.32 CARAT**
 Color Grade **H**
 Clarity Grade **VVS 2**

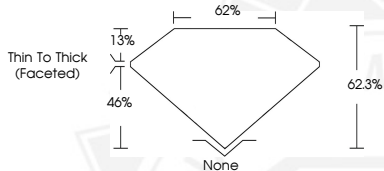
ADDITIONAL GRADING INFORMATION

Polish **VERY GOOD**
 Symmetry **VERY GOOD**
 Fluorescence **NONE**
 Inscription(s) **IGI LG783601064**

Comments: As Grown - No indication of post-growth treatment. This Laboratory Grown Diamond was created by High Pressure High Temperature (HPHT) growth process.
 Type II
 Faint Blue



Sample Image Used



March 19, 2026
 IGI Report Number **LG783601064**
OVAL BRILLIANT
LABORATORY GROWN DIAMOND
5.57 X 3.82 X 2.38 MM
 Carat Weight **0.32 CARAT**
 Color Grade **H**
 Clarity Grade **VVS 2**
 Polish **VERY GOOD**
 Symmetry **VERY GOOD**
 Fluorescence **NONE**
 Inscription(s) **IGI LG783601064**

Comments: As Grown - No indication of post-growth treatment. This Laboratory Grown Diamond was created by High Pressure High Temperature (HPHT) growth process. Type II Faint Blue



March 19, 2026
 IGI Report Number **LG783601064**
OVAL BRILLIANT
LABORATORY GROWN DIAMOND
5.57 X 3.82 X 2.38 MM
 Carat Weight **0.32 CARAT**
 Color Grade **H**
 Clarity Grade **VVS 2**
 Polish **VERY GOOD**
 Symmetry **VERY GOOD**
 Fluorescence **NONE**
 Inscription(s) **IGI LG783601064**

Comments: As Grown - No indication of post-growth treatment. This Laboratory Grown Diamond was created by High Pressure High Temperature (HPHT) growth process. Type II Faint Blue



THIS DOCUMENT WAS PRODUCED WITH THE FOLLOWING SECURITY MEASURES: SPECIAL DOCUMENT PAPER, INK SCREENS, WATERMARK, BACKGROUND DESIGNS, HOLOGRAM AND OTHER SECURITY FEATURES NOT LISTED AND DO EXCEED DOCUMENT SECURITY INDUSTRY GUIDELINES.