



LABORATORY GROWN DIAMOND REPORT

April 18, 2026
 IGI Report Number **LG783602919**
 Description **LABORATORY GROWN DIAMOND**
 Shape and Cutting Style **PRINCESS CUT**
 Measurements **4.27 X 4.25 X 3.15 MM**

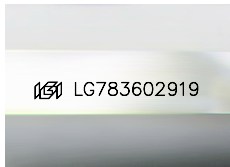
GRADING RESULTS

Carat Weight **0.50 CARAT**
 Color Grade **G**
 Clarity Grade **SI 1**

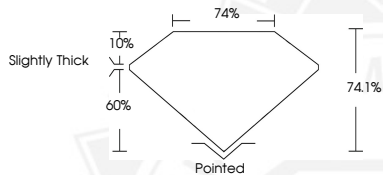
ADDITIONAL GRADING INFORMATION

Polish **VERY GOOD**
 Symmetry **GOOD**
 Fluorescence **NONE**
 Inscription(s) **IGI LG783602919**

Comments: This Laboratory Grown Diamond was created by Chemical Vapor Deposition (CVD) growth process. Type IIa



Sample Image Used



April 18, 2026
 IGI Report Number **LG783602919**
PRINCESS CUT
LABORATORY GROWN DIAMOND
4.27 X 4.25 X 3.15 MM
 Carat Weight **0.50 CARAT**
 Color Grade **G**
 Clarity Grade **SI 1**
 Polish **VERY GOOD**
 Symmetry **GOOD**
 Fluorescence **NONE**
 Inscription(s) **IGI LG783602919**

Comments: This Laboratory Grown Diamond was created by Chemical Vapor Deposition (CVD) growth process. Type IIa



April 18, 2026
 IGI Report Number **LG783602919**
PRINCESS CUT
LABORATORY GROWN DIAMOND
4.27 X 4.25 X 3.15 MM
 Carat Weight **0.50 CARAT**
 Color Grade **G**
 Clarity Grade **SI 1**
 Polish **VERY GOOD**
 Symmetry **GOOD**
 Fluorescence **NONE**
 Inscription(s) **IGI LG783602919**

Comments: This Laboratory Grown Diamond was created by Chemical Vapor Deposition (CVD) growth process. Type IIa



THIS DOCUMENT WAS PRODUCED WITH THE FOLLOWING SECURITY MEASURES: SPECIAL DOCUMENT PAPER, INK SCREENS, WATERMARK, BACKGROUND DESIGNS, HOLOGRAM AND OTHER SECURITY FEATURES NOT LISTED AND DO EXCEED DOCUMENT SECURITY INDUSTRY GUIDELINES.