



ELECTRONIC COPY

LG783604078
Report verification at igi.org



March 19, 2026
IGI Report Number LG783604078
Description LABORATORY GROWN DIAMOND
Shape and Cutting Style SQUARE CUSHION MODIFIED BRILLIANT
Measurements 7.47 X 7.39 X 5.07 MM
GRADING RESULTS
Carat Weight 2.11 CARATS
Color Grade D
Clarity Grade VVS 2

LABORATORY GROWN DIAMOND REPORT

March 19, 2026
IGI Report Number LG783604078
Description LABORATORY GROWN DIAMOND
Shape and Cutting Style SQUARE CUSHION MODIFIED BRILLIANT
Measurements 7.47 X 7.39 X 5.07 MM

GRADING RESULTS

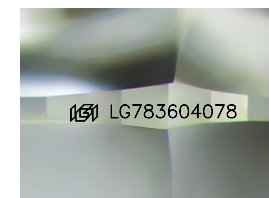
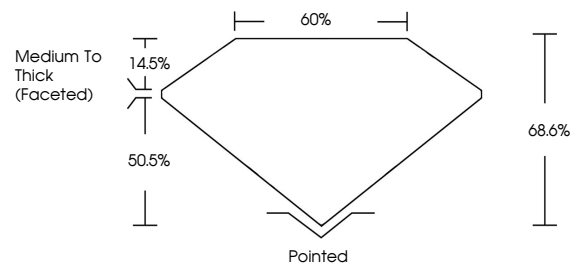
Carat Weight 2.11 CARATS
Color Grade D
Clarity Grade VVS 2

ADDITIONAL GRADING INFORMATION

Polish EXCELLENT
Symmetry EXCELLENT
Fluorescence NONE
Inscription(s) IGI LG783604078

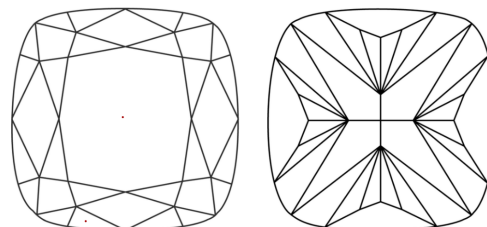
Comments: This Laboratory Grown Diamond was created by Chemical Vapor Deposition (CVD) growth process. Type IIa

PROPORTIONS



Sample Image Used

CLARITY CHARACTERISTICS



KEY TO SYMBOLS

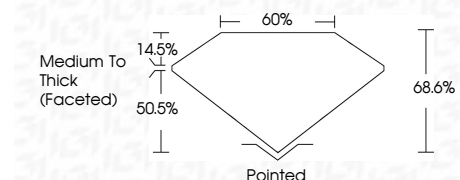
Red symbols indicate internal characteristics.
Green symbols indicate external characteristics.

COLOR

D E F G H I J Faint Very Light Light

CLARITY

Table with columns for clarity grades: FL, IF, VVS 1-2, VS 1-2, SI 1-2, I 1-3. Corresponding descriptions: Flawless, Internally Flawless, Very Very Slightly Included, Very Slightly Included, Slightly Included, Included.



ADDITIONAL GRADING INFORMATION

Polish EXCELLENT
Symmetry EXCELLENT
Fluorescence NONE
Inscription(s) IGI LG783604078
Comments: This Laboratory Grown Diamond was created by Chemical Vapor Deposition (CVD) growth process. Type IIa



March 19, 2026
IGI Report No LG783604078
SQUARE CUSHION MODIFIED BRILLIANT
2.11 CARATS
D
2.11 CARATS
D
7.47 X 7.39 X 5.07 MM
VVS 2
68.6%
50.5%
Medium To Thick (Faceted)
Pointed
EXCELLENT
EXCELLENT
NONE
IGI LG783604078
Comments: This Laboratory Grown Diamond was created by Chemical Vapor Deposition (CVD) growth process. Type IIa