



**ELECTRONIC COPY**

LG783620122  
Report verification at igi.org



April 1, 2026

IGI Report Number **LG783620122**

Description **LABORATORY GROWN DIAMOND**

Shape and Cutting Style **ROUND BRILLIANT**

Measurements **10.18 - 10.22 X 6.18 MM**

**GRADING RESULTS**

Carat Weight **4.01 CARATS**

Color Grade **E**

Clarity Grade **VVS 2**

Cut Grade **IDEAL**

April 1, 2026

IGI Report Number **LG783620122**

Description **LABORATORY GROWN DIAMOND**

Shape and Cutting Style **ROUND BRILLIANT**

Measurements **10.18 - 10.22 X 6.18 MM**

**GRADING RESULTS**

Carat Weight **4.01 CARATS**

Color Grade **E**

Clarity Grade **VVS 2**

Cut Grade **IDEAL**

**ADDITIONAL GRADING INFORMATION**

Polish **EXCELLENT**

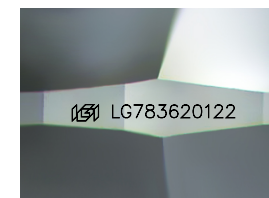
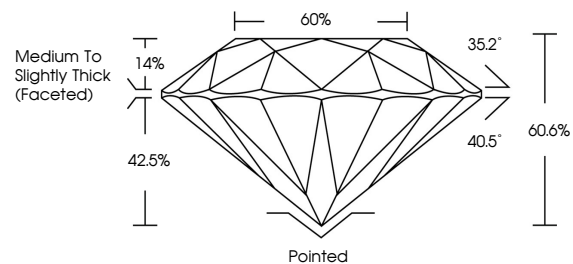
Symmetry **EXCELLENT**

Fluorescence **NONE**

Inscription(s) **IGI LG783620122**

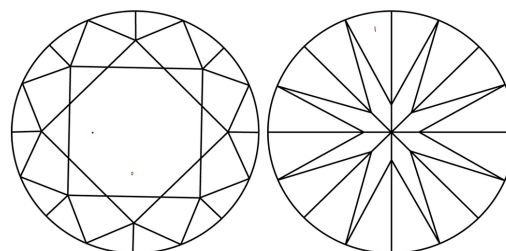
Comments: This Laboratory Grown Diamond was created by Chemical Vapor Deposition (CVD) growth process. Type IIa

**PROPORTIONS**



Sample Image Used

**CLARITY CHARACTERISTICS**



**KEY TO SYMBOLS**

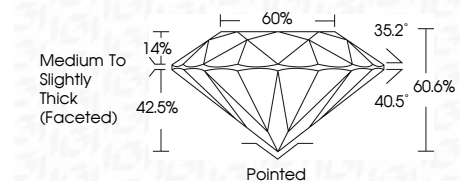
Red symbols indicate internal characteristics.  
Green symbols indicate external characteristics.

**COLOR**

D E F G H I J Faint Very Light Light

**CLARITY**

FL	IF	VVS <sup>1-2</sup>	VS <sup>1-2</sup>	SI <sup>1-2</sup>	I <sup>1-3</sup>
Flawless	Internally Flawless	Very Very Slightly Included	Very Slightly Included	Slightly Included	Included



**ADDITIONAL GRADING INFORMATION**

Polish **EXCELLENT**

Symmetry **EXCELLENT**

Fluorescence **NONE**

Inscription(s) **IGI LG783620122**

Comments: This Laboratory Grown Diamond was created by Chemical Vapor Deposition (CVD) growth process. Type IIa



**IGI**



April 1, 2026	IGI Report No LG783620122	4.01 CARATS	E	Pointed	EXCELLENT	EXCELLENT	NONE	IGI LG783620122
ROUND BRILLIANT	10.18 - 10.22 X 6.18 MM	Color Grade	VVS 2	Depth	IDEAL	60.6%	Medium To Slightly Thick (Faceted)	None
		Clarity Grade	IDEAL	Cut Grade	60%	Pointed	EXCELLENT	EXCELLENT
		Table	60%	Grade	None	Symmetry	EXCELLENT	EXCELLENT
						Fluorescence	NONE	NONE
						Inscription(s)	IGI LG783620122	

Comments: This Laboratory Grown Diamond was created by Chemical Vapor Deposition (CVD) growth process. Type IIa