



LABORATORY GROWN DIAMOND REPORT

March 17, 2026
IGI Report Number **LG783635188**
Description **LABORATORY GROWN DIAMOND**
Shape and Cutting Style **PEAR BRILLIANT**
Measurements **6.11 X 3.79 X 2.32 MM**

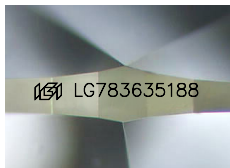
GRADING RESULTS

Carat Weight **0.32 CARAT**
Color Grade **D**
Clarity Grade **VVS 1**

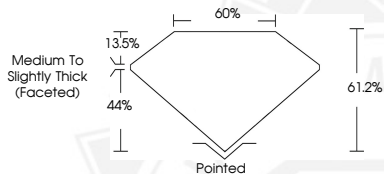
ADDITIONAL GRADING INFORMATION

Polish **EXCELLEN**
Symmetry **VERY GOOD**
Fluorescence **NONE**
Inscription(s) **IGI LG783635188**

Comments: This Laboratory Grown Diamond was created by Chemical Vapor Deposition (CVD) growth process. Type IIa



Sample Image Used



March 17, 2026
IGI Report Number **LG783635188**
PEAR BRILLIANT
LABORATORY GROWN DIAMOND
6.11 X 3.79 X 2.32 MM
Carat Weight **0.32 CARAT**
Color Grade **D**
Clarity Grade **VVS 1**
Polish **EXCELLEN**
Symmetry **VERY GOOD**
Fluorescence **NONE**
Inscription(s) **IGI LG783635188**

Comments: This Laboratory Grown Diamond was created by Chemical Vapor Deposition (CVD) growth process. Type IIa



March 17, 2026
IGI Report Number **LG783635188**
PEAR BRILLIANT
LABORATORY GROWN DIAMOND
6.11 X 3.79 X 2.32 MM
Carat Weight **0.32 CARAT**
Color Grade **D**
Clarity Grade **VVS 1**
Polish **EXCELLEN**
Symmetry **VERY GOOD**
Fluorescence **NONE**
Inscription(s) **IGI LG783635188**

Comments: This Laboratory Grown Diamond was created by Chemical Vapor Deposition (CVD) growth process. Type IIa



THIS DOCUMENT WAS PRODUCED WITH THE FOLLOWING SECURITY MEASURES: SPECIAL DOCUMENT PAPER, INK SCREENS, WATERMARK, BACKGROUND DESIGNS, HOLOGRAM AND OTHER SECURITY FEATURES NOT LISTED AND DO EXCEED DOCUMENT SECURITY INDUSTRY GUIDELINES.