



**ELECTRONIC COPY**

LG783640918  
Report verification at igi.org



April 1, 2026  
IGI Report Number **LG783640918**  
Description **LABORATORY GROWN DIAMOND**  
Shape and Cutting Style **ROUND BRILLIANT**  
Measurements **11.09 - 11.12 X 6.63 MM**  
**GRADING RESULTS**  
Carat Weight **5.04 CARATS**  
Color Grade **E**  
Clarity Grade **VVS 1**  
Cut Grade **EXCELLENT**

April 1, 2026  
IGI Report Number **LG783640918**  
Description **LABORATORY GROWN DIAMOND**  
Shape and Cutting Style **ROUND BRILLIANT**  
Measurements **11.09 - 11.12 X 6.63 MM**

**GRADING RESULTS**

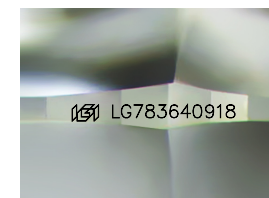
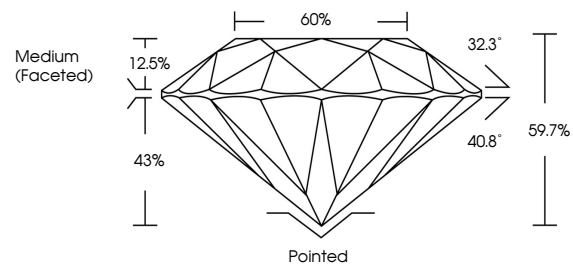
Carat Weight **5.04 CARATS**  
Color Grade **E**  
Clarity Grade **VVS 1**  
Cut Grade **EXCELLENT**

**ADDITIONAL GRADING INFORMATION**

Polish **EXCELLENT**  
Symmetry **EXCELLENT**  
Fluorescence **NONE**  
Inscription(s) **IGI LG783640918**

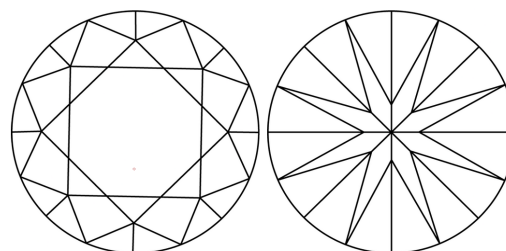
Comments: This Laboratory Grown Diamond was created by Chemical Vapor Deposition (CVD) growth process.  
Type IIa

**PROPORTIONS**



Sample Image Used

**CLARITY CHARACTERISTICS**



**KEY TO SYMBOLS**

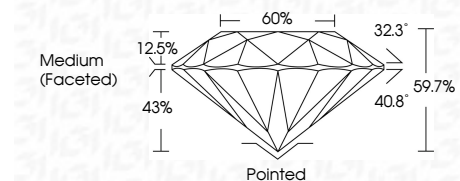
Red symbols indicate internal characteristics.  
Green symbols indicate external characteristics.

**COLOR**

D E F G H I J Faint Very Light Light

**CLARITY**

FL	IF	VVS <sup>1-2</sup>	VS <sup>1-2</sup>	SI <sup>1-2</sup>	I <sup>1-3</sup>
Flawless	Internally Flawless	Very Very Slightly Included	Very Slightly Included	Slightly Included	Included



**ADDITIONAL GRADING INFORMATION**

Polish **EXCELLENT**  
Symmetry **EXCELLENT**  
Fluorescence **NONE**  
Inscription(s) **IGI LG783640918**  
Comments: This Laboratory Grown Diamond was created by Chemical Vapor Deposition (CVD) growth process.  
Type IIa



April 1, 2026  
IGI Report No **LG783640918**  
**ROUND BRILLIANT**  
11.09 - 11.12 X 6.63 MM  
5.04 CARATS  
E  
VVS 1  
EXCELLENT  
59.7%  
60%  
Medium (Faceted)  
Pointed  
EXCELLENT  
EXCELLENT  
NONE  
IGI LG783640918  
Comments: This Laboratory Grown Diamond was created by Chemical Vapor Deposition (CVD) growth process.  
Type IIa