



ELECTRONIC COPY

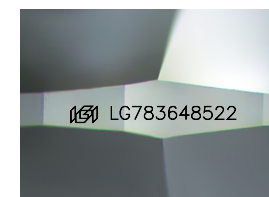
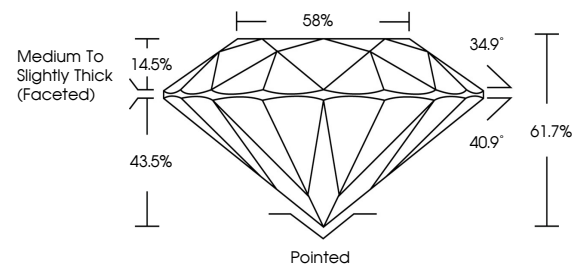
LG783648522
Report verification at igi.org



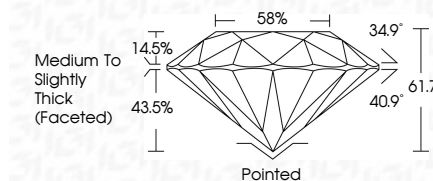
April 7, 2026
IGI Report Number LG783648522
Description LABORATORY GROWN DIAMOND
Shape and Cutting Style ROUND BRILLIANT
Measurements 6.46 - 6.51 X 4.01 MM
GRADING RESULTS
Carat Weight 1.04 CARAT
Color Grade E
Clarity Grade VVS 2
Cut Grade IDEAL

April 7, 2026
IGI Report Number LG783648522
Description LABORATORY GROWN DIAMOND
Shape and Cutting Style ROUND BRILLIANT
Measurements 6.46 - 6.51 X 4.01 MM
GRADING RESULTS
Carat Weight 1.04 CARAT
Color Grade E
Clarity Grade VVS 2
Cut Grade IDEAL

PROPORTIONS



Sample Image Used



ADDITIONAL GRADING INFORMATION

Polish EXCELLENT
Symmetry EXCELLENT
Fluorescence NONE
Inscription(s) IGI LG783648522

Comments: As Grown - No indication of post-growth treatment. This Laboratory Grown Diamond was created by High Pressure High Temperature (HPHT) growth process. Type II

COLOR

D E F G H I J Faint Very Light Light

CLARITY

FL IF VVS 1-2 VS 1-2 SI 1-2 I 1-3
Flawless Internally Flawless Very Very Slightly Included Very Slightly Included Slightly Included Included

ADDITIONAL GRADING INFORMATION

Polish EXCELLENT
Symmetry EXCELLENT
Fluorescence NONE
Inscription(s) IGI LG783648522
Comments: As Grown - No indication of post-growth treatment. This Laboratory Grown Diamond was created by High Pressure High Temperature (HPHT) growth process. Type II



IGI



Summary of report details including date, report number, description, measurements, grading results, and additional information.