



LABORATORY GROWN DIAMOND REPORT

March 20, 2026
 IGI Report Number **LG783657830**
 Description **LABORATORY GROWN DIAMOND**
 Shape and Cutting Style **HEART BRILLIANT**
 Measurements **5.31 X 6.38 X 3.55 MM**

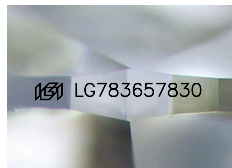
GRADING RESULTS

Carat Weight **0.87 CARAT**
 Color Grade **FANCY INTENSE YELLOW**
 Clarity Grade **VS 2**

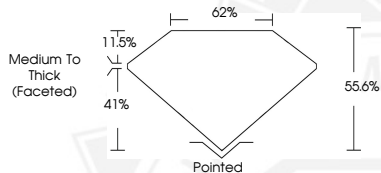
ADDITIONAL GRADING INFORMATION

Polish **VERY GOOD**
 Symmetry **VERY GOOD**
 Fluorescence **NONE**
 Inscription(s) **IGI LG783657830**

Comments: This Laboratory Grown Diamond was created by Chemical Vapor Deposition (CVD) growth process.



Sample Image Used



March 20, 2026
 IGI Report Number **LG783657830**
HEART BRILLIANT
LABORATORY GROWN DIAMOND
5.31 X 6.38 X 3.55 MM
 Carat Weight **0.87 CARAT**
 Color Grade **FANCY INTENSE YELLOW**
 Clarity Grade **VS 2**
 Polish **VERY GOOD**
 Symmetry **VERY GOOD**
 Fluorescence **NONE**
 Inscription(s) **IGI LG783657830**

Comments: This Laboratory Grown Diamond was created by Chemical Vapor Deposition (CVD) growth process.



March 20, 2026
 IGI Report Number **LG783657830**
HEART BRILLIANT
LABORATORY GROWN DIAMOND
5.31 X 6.38 X 3.55 MM
 Carat Weight **0.87 CARAT**
 Color Grade **FANCY INTENSE YELLOW**
 Clarity Grade **VS 2**
 Polish **VERY GOOD**
 Symmetry **VERY GOOD**
 Fluorescence **NONE**
 Inscription(s) **IGI LG783657830**

Comments: This Laboratory Grown Diamond was created by Chemical Vapor Deposition (CVD) growth process.



THIS DOCUMENT WAS PRODUCED WITH THE FOLLOWING SECURITY MEASURES: SPECIAL DOCUMENT PAPER, INK SCREENS, WATERMARK, BACKGROUND DESIGNS, HOLOGRAM AND OTHER SECURITY FEATURES NOT LISTED AND DO EXCEED DOCUMENT SECURITY INDUSTRY GUIDELINES.