



ELECTRONIC COPY

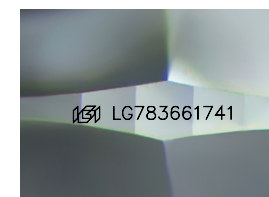
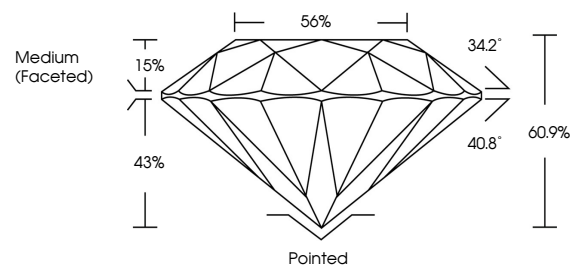
LG783661741
Report verification at igi.org



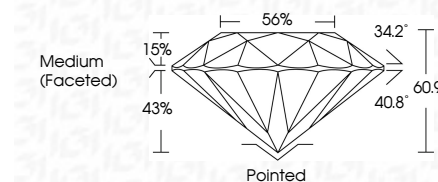
March 17, 2026
IGI Report Number **LG783661741**
Description **LABORATORY GROWN DIAMOND**
Shape and Cutting Style **ROUND BRILLIANT**
Measurements **10.16 - 10.20 X 6.20 MM**
GRADING RESULTS
Carat Weight **3.89 CARATS**
Color Grade **D**
Clarity Grade **VS 1**
Cut Grade **IDEAL**

March 17, 2026
IGI Report Number **LG783661741**
Description **LABORATORY GROWN DIAMOND**
Shape and Cutting Style **ROUND BRILLIANT**
Measurements **10.16 - 10.20 X 6.20 MM**
GRADING RESULTS
Carat Weight **3.89 CARATS**
Color Grade **D**
Clarity Grade **VS 1**
Cut Grade **IDEAL**

PROPORTIONS



Sample Image Used



ADDITIONAL GRADING INFORMATION

Polish **EXCELLENT**
Symmetry **EXCELLENT**
Fluorescence **NONE**
Inscription(s) **IGI LG783661741**

Comments: This Laboratory Grown Diamond was created by Chemical Vapor Deposition (CVD) growth process. Type IIa

ADDITIONAL GRADING INFORMATION

Polish **EXCELLENT**
Symmetry **EXCELLENT**
Fluorescence **NONE**
Inscription(s) **IGI LG783661741**
Comments: This Laboratory Grown Diamond was created by Chemical Vapor Deposition (CVD) growth process. Type IIa

COLOR

D E F G H I J Faint Very Light Light

CLARITY

FL	IF	VS ¹⁻²	VS ¹⁻²	SI ¹⁻²	I ¹⁻³
Flawless	Internally Flawless	Very Very Slightly Included	Very Slightly Included	Slightly Included	Included



IGI



March 17, 2026
IGI Report No LG783661741
ROUND BRILLIANT
10.16 - 10.20 X 6.20 MM
3.89 CARATS
D
VS 1
IDEAL
60.9%
56%
Medium (Faceted)Pointed
EXCELLENT
EXCELLENT
NONE
IGI LG783661741
Comments: This Laboratory Grown Diamond was created by Chemical Vapor Deposition (CVD) growth process. Type IIa