



March 17, 2026

IGI Report Number **LG783663739**

**ROUND BRILLIANT  
LABORATORY GROWN DIAMOND  
4.14 - 4.16 X 2.50 MM**

Carat Weight	<b>0.27 CARAT</b>
Color Grade	<b>D</b>
Clarity Grade	<b>VS 1</b>
Cut Grade	<b>IDEAL</b>
Polish	<b>EXCELLENT</b>
Symmetry	<b>EXCELLENT</b>
Fluorescence	<b>NONE</b>
Inscription(s)	<b>IGI LG783663739</b>

Comments: This Laboratory Grown Diamond was created by Chemical Vapor Deposition (CVD) growth process. Type IIa

**LABORATORY GROWN DIAMOND REPORT**

March 17, 2026

IGI Report Number

**LG783663739**

Description

**LABORATORY GROWN DIAMOND**

Shape and Cutting Style

**ROUND BRILLIANT**

Measurements

**4.14 - 4.16 X 2.50 MM**

**GRADING RESULTS**

Carat Weight

**0.27 CARAT**

Color Grade

**D**

Clarity Grade

**VS 1**

Cut Grade

**IDEAL**

**ADDITIONAL GRADING INFORMATION**

Polish

**EXCELLENT**

Symmetry

**EXCELLENT**

Fluorescence

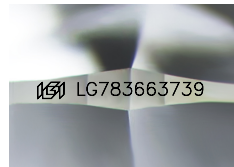
**NONE**

Inscription(s)

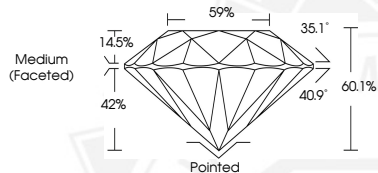
**IGI LG783663739**

Comments: This Laboratory Grown Diamond was created by Chemical Vapor Deposition (CVD) growth process.

Type IIa



Sample Image Used



March 17, 2026

IGI Report Number **LG783663739**

**ROUND BRILLIANT  
LABORATORY GROWN DIAMOND  
4.14 - 4.16 X 2.50 MM**

Carat Weight	<b>0.27 CARAT</b>
Color Grade	<b>D</b>
Clarity Grade	<b>VS 1</b>
Cut Grade	<b>IDEAL</b>
Polish	<b>EXCELLENT</b>
Symmetry	<b>EXCELLENT</b>
Fluorescence	<b>NONE</b>
Inscription(s)	<b>IGI LG783663739</b>

Comments: This Laboratory Grown Diamond was created by Chemical Vapor Deposition (CVD) growth process. Type IIa



THIS DOCUMENT WAS PRODUCED WITH THE FOLLOWING SECURITY MEASURES: SPECIAL DOCUMENT PAPER, INK SCREENS, WATERMARK, BACKGROUND DESIGNS, HOLOGRAM AND OTHER SECURITY FEATURES NOT LISTED AND DO EXCEED DOCUMENT SECURITY INDUSTRY GUIDELINES.