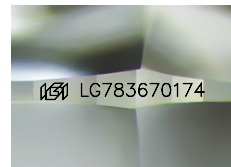




March 23, 2026  
**IGI Report Number** LG783670174  
**ROUND BRILLIANT**  
**LABORATORY GROWN DIAMOND**  
**5.73 - 5.76 X 3.48 MM**  
 Carat Weight **0.71 CARAT**  
 Color Grade **E**  
 Clarity Grade **VS 2**  
 Cut Grade **IDEAL**  
 Polish **EXCELLENT**  
 Symmetry **EXCELLENT**  
 Fluorescence **NONE**  
 Inscription(s) **IGI LG783670174**

**LABORATORY GROWN DIAMOND REPORT**

March 23, 2026  
 IGI Report Number **LG783670174**  
 Description **LABORATORY GROWN DIAMOND**  
 Shape and Cutting Style **ROUND BRILLIANT**  
 Measurements **5.73 - 5.76 X 3.48 MM**



Sample Image Used

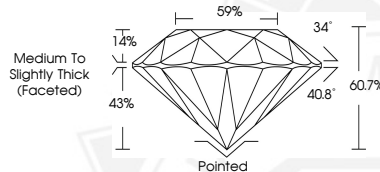
**GRADING RESULTS**

Carat Weight **0.71 CARAT**  
 Color Grade **E**  
 Clarity Grade **VS 2**  
 Cut Grade **IDEAL**

**ADDITIONAL GRADING INFORMATION**

Polish **EXCELLENT**  
 Symmetry **EXCELLENT**  
 Fluorescence **NONE**  
 Inscription(s) **IGI LG783670174**

Comments: This Laboratory Grown Diamond was created by Chemical Vapor Deposition (CVD) growth process. Type IIa



March 23, 2026  
**IGI Report Number** LG783670174  
**ROUND BRILLIANT**  
**LABORATORY GROWN DIAMOND**  
**5.73 - 5.76 X 3.48 MM**  
 Carat Weight **0.71 CARAT**  
 Color Grade **E**  
 Clarity Grade **VS 2**  
 Cut Grade **IDEAL**  
 Polish **EXCELLENT**  
 Symmetry **EXCELLENT**  
 Fluorescence **NONE**  
 Inscription(s) **IGI LG783670174**

Comments: This Laboratory Grown Diamond was created by Chemical Vapor Deposition (CVD) growth process. Type IIa

THIS DOCUMENT WAS PRODUCED WITH THE FOLLOWING SECURITY MEASURES: SPECIAL DOCUMENT PAPER, INK SCREENS, WATERMARK, BACKGROUND DESIGNS, HOLOGRAM AND OTHER SECURITY FEATURES NOT LISTED AND DO EXCEED DOCUMENT SECURITY INDUSTRY GUIDELINES.