



**ELECTRONIC COPY**

LG783670445  
Report verification at igi.org



March 19, 2026  
IGI Report Number **LG783670445**  
Description **LABORATORY GROWN DIAMOND**  
Shape and Cutting Style **CUT CORNERED  
RECTANGULAR MODIFIED  
BRILLIANT**  
Measurements **9.36 X 6.52 X 4.41 MM**  
**GRADING RESULTS**  
Carat Weight **2.41 CARATS**  
Color Grade **G**  
Clarity Grade **VVS 2**  
Cut Grade **EXCELLENT**

**LABORATORY GROWN DIAMOND REPORT**

March 19, 2026  
IGI Report Number **LG783670445**  
Description **LABORATORY GROWN DIAMOND**  
Shape and Cutting Style **CUT CORNERED RECTANGULAR  
MODIFIED BRILLIANT**  
Measurements **9.36 X 6.52 X 4.41 MM**

**GRADING RESULTS**

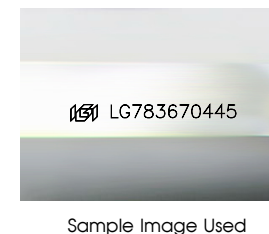
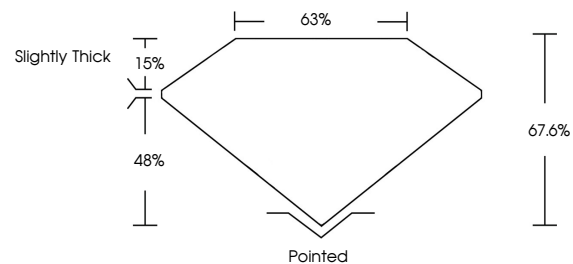
Carat Weight **2.41 CARATS**  
Color Grade **G**  
Clarity Grade **VVS 2**  
Cut Grade **EXCELLENT**

**ADDITIONAL GRADING INFORMATION**

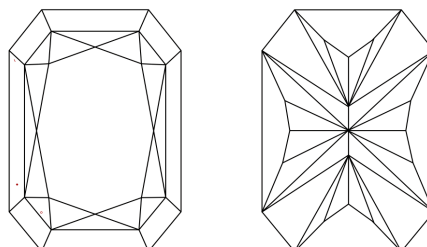
Polish **EXCELLENT**  
Symmetry **EXCELLENT**  
Fluorescence **NONE**  
Inscription(s) **IGI LG783670445**

Comments: This Laboratory Grown Diamond was created by Chemical Vapor Deposition (CVD) growth process. Type IIa

**PROPORTIONS**



**CLARITY CHARACTERISTICS**



**KEY TO SYMBOLS**

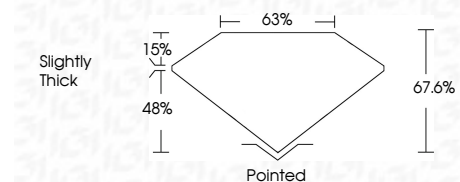
Red symbols indicate internal characteristics.  
Green symbols indicate external characteristics.

**COLOR**

D E F G H I J Faint Very Light Light

**CLARITY**

FL	IF	VVS <sup>1-2</sup>	VS <sup>1-2</sup>	SI <sup>1-2</sup>	I <sup>1-3</sup>
Flawless	Internally Flawless	Very Very Slightly Included	Very Slightly Included	Slightly Included	Included



**ADDITIONAL GRADING INFORMATION**

Polish **EXCELLENT**  
Symmetry **EXCELLENT**  
Fluorescence **NONE**  
Inscription(s) **IGI LG783670445**  
Comments: This Laboratory Grown Diamond was created by Chemical Vapor Deposition (CVD) growth process. Type IIa



March 19, 2026  
IGI Report No LG783670445  
CUT CORNERED RECT. MODIFIED BRILLIANT  
9.36 X 6.52 X 4.41 MM  
2.41 CARATS  
Color Grade G  
Clarity Grade VVS 2  
Depth 67.6%  
Table 63%  
Girdle Slightly Thick  
Culet Pointed  
Polish EXCELLENT  
Symmetry EXCELLENT  
Fluorescence NONE  
Inscription(s) IGI LG783670445  
Comments: This Laboratory Grown Diamond was created by Chemical Vapor Deposition (CVD) growth process. Type IIa