



ELECTRONIC COPY

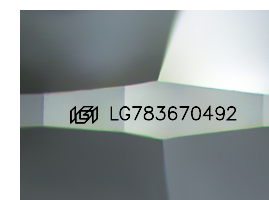
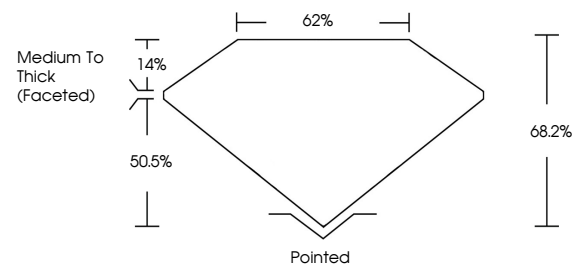
LG783670492
Report verification at igi.org



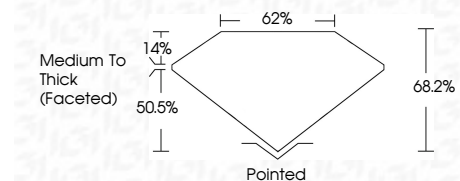
March 18, 2026
IGI Report Number **LG783670492**
Description **LABORATORY GROWN DIAMOND**
Shape and Cutting Style **SQUARE CUSHION MODIFIED BRILLIANT**
Measurements **6.18 X 6.07 X 4.14 MM**
GRADING RESULTS
Carat Weight **1.22 CARAT**
Color Grade **E**
Clarity Grade **VVS 2**

March 18, 2026
IGI Report Number **LG783670492**
Description **LABORATORY GROWN DIAMOND**
Shape and Cutting Style **SQUARE CUSHION MODIFIED BRILLIANT**
Measurements **6.18 X 6.07 X 4.14 MM**

PROPORTIONS



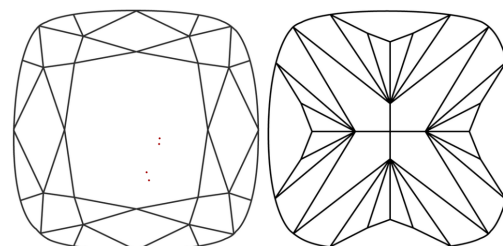
Sample Image Used



GRADING RESULTS

Carat Weight **1.22 CARAT**
Color Grade **E**
Clarity Grade **VVS 2**

CLARITY CHARACTERISTICS



KEY TO SYMBOLS

Red symbols indicate internal characteristics.
Green symbols indicate external characteristics.

ADDITIONAL GRADING INFORMATION

Polish **EXCELLENT**
Symmetry **EXCELLENT**
Fluorescence **NONE**
Inscription(s) **IGI LG783670492**

Comments: As Grown - No indication of post-growth treatment.
This Laboratory Grown Diamond was created by High Pressure High Temperature (HPHT) growth process.
Type II

COLOR

D E F G H I J Faint Very Light Light

CLARITY

FL	IF	VVS ¹⁻²	VS ¹⁻²	SI ¹⁻²	I ¹⁻³
Flawless	Internally Flawless	Very Very Slightly Included	Very Slightly Included	Slightly Included	Included

ADDITIONAL GRADING INFORMATION

Polish **EXCELLENT**
Symmetry **EXCELLENT**
Fluorescence **NONE**
Inscription(s) **IGI LG783670492**
Comments: As Grown - No indication of post-growth treatment.
This Laboratory Grown Diamond was created by High Pressure High Temperature (HPHT) growth process.
Type II



March 18, 2026
IGI Report No **LG783670492**
SQUARE CUSHION MODIFIED BRILLIANT
6.18 X 6.07 X 4.14 MM
Carat Weight **1.22 CARAT**
Color Grade **E**
Clarity Grade **VVS 2**
Depth **68.2%**
Table **62%**
Girdle **Medium To Thick (Faceted)**
Culet **Pointed**
Polish **EXCELLENT**
Symmetry **EXCELLENT**
Fluorescence **NONE**
Inscription(s) **IGI LG783670492**
Comments: As Grown - No indication of post-growth treatment.
This Laboratory Grown Diamond was created by High Pressure High Temperature (HPHT) growth process.
Type II