



**ELECTRONIC COPY**

LG783671956  
Report verification at igi.org



March 20, 2026

IGI Report Number **LG783671956**

Description **LABORATORY GROWN DIAMOND**

Shape and Cutting Style **EMERALD CUT**

Measurements **9.45 X 6.32 X 4.18 MM**

**GRADING RESULTS**

Carat Weight **2.56 CARATS**

Color Grade **D**

Clarity Grade **VS 1**

**LABORATORY GROWN DIAMOND REPORT**

March 20, 2026

IGI Report Number **LG783671956**

Description **LABORATORY GROWN DIAMOND**

Shape and Cutting Style **EMERALD CUT**

Measurements **9.45 X 6.32 X 4.18 MM**

**GRADING RESULTS**

Carat Weight **2.56 CARATS**

Color Grade **D**

Clarity Grade **VS 1**

**ADDITIONAL GRADING INFORMATION**

Polish **EXCELLENT**

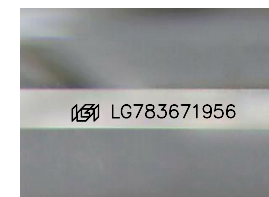
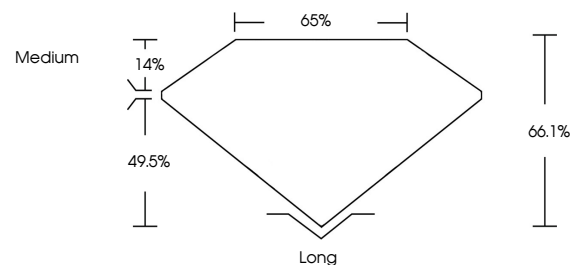
Symmetry **EXCELLENT**

Fluorescence **NONE**

Inscription(s) **IGI LG783671956**

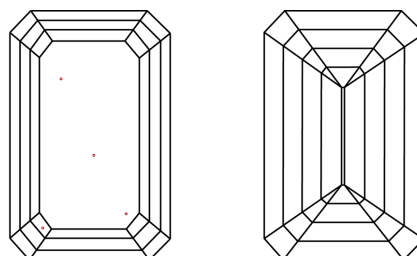
Comments: This Laboratory Grown Diamond was created by Chemical Vapor Deposition (CVD) growth process.  
Type IIa

**PROPORTIONS**



Sample Image Used

**CLARITY CHARACTERISTICS**



**KEY TO SYMBOLS**

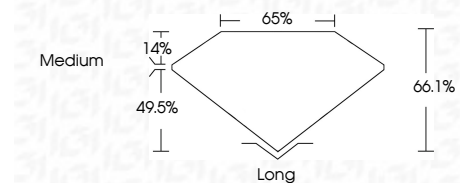
Red symbols indicate internal characteristics.  
Green symbols indicate external characteristics.

**COLOR**

D E F G H I J Faint Very Light Light

**CLARITY**

FL	IF	VS <sup>1-2</sup>	VS <sup>1-2</sup>	SI <sup>1-2</sup>	I <sup>1-3</sup>
Flawless	Internally Flawless	Very Very Slightly Included	Very Slightly Included	Slightly Included	Included



**ADDITIONAL GRADING INFORMATION**

Polish **EXCELLENT**

Symmetry **EXCELLENT**

Fluorescence **NONE**

Inscription(s) **IGI LG783671956**

Comments: This Laboratory Grown Diamond was created by Chemical Vapor Deposition (CVD) growth process.  
Type IIa



**IGI**



March 20, 2026  
IGI Report No LG783671956  
**EMERALD CUT**

**2.56 CARATS**  
D

9.45 X 6.32 X 4.18 MM  
Color Grade **D**  
Clarity Grade **VS 1**  
Depth **49.5%**  
Table **14%**  
Girdle **Medium**

Long **65%**  
Culet **EXCELLENT**  
Polish **EXCELLENT**  
Symmetry **EXCELLENT**  
Fluorescence **NONE**  
Inscription(s) **IGI LG783671956**

Comments: This Laboratory Grown Diamond was created by Chemical Vapor Deposition (CVD) growth process.  
Type IIa