



ELECTRONIC COPY

LG784606160 Report verification at igi.org



March 22, 2026 IGI Report Number LG784606160 Description LABORATORY GROWN DIAMOND Shape and Cutting Style CUT CORNERED RECTANGULAR MODIFIED BRILLIANT Measurements 10.88 X 8.01 X 5.45 MM GRADING RESULTS Carat Weight 4.16 CARATS Color Grade E Clarity Grade VS 1

March 22, 2026 IGI Report Number LG784606160 Description LABORATORY GROWN DIAMOND Shape and Cutting Style CUT CORNERED RECTANGULAR MODIFIED BRILLIANT Measurements 10.88 X 8.01 X 5.45 MM

GRADING RESULTS

Carat Weight 4.16 CARATS Color Grade E Clarity Grade VS 1

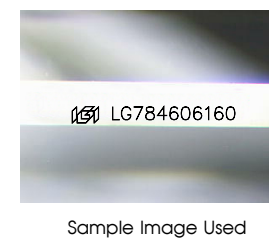
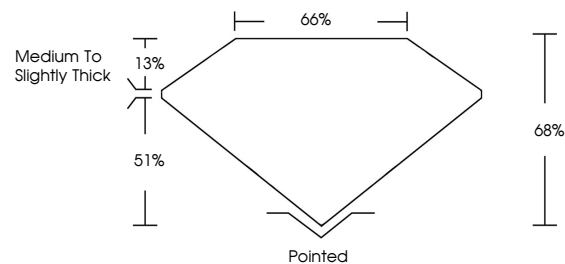
ADDITIONAL GRADING INFORMATION

Polish EXCELLENT Symmetry EXCELLENT Fluorescence NONE

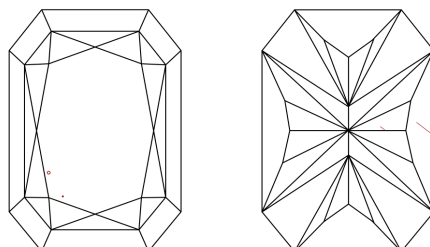
Inscription(s) IGI LG784606160

Comments: This Laboratory Grown Diamond was created by Chemical Vapor Deposition (CVD) growth process. Type IIa

PROPORTIONS



CLARITY CHARACTERISTICS



KEY TO SYMBOLS

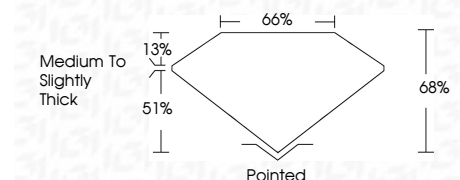
Red symbols indicate internal characteristics. Green symbols indicate external characteristics.

COLOR

D E F G H I J Faint Very Light Light

CLARITY

FL IF VS 1-2 VS 2-3 SI 1-2 I 1-3 Flawless Internally Flawless Very Very Slightly Included Very Slightly Included Slightly Included Included



ADDITIONAL GRADING INFORMATION

Polish EXCELLENT Symmetry EXCELLENT Fluorescence NONE Inscription(s) IGI LG784606160 Comments: This Laboratory Grown Diamond was created by Chemical Vapor Deposition (CVD) growth process. Type IIa



March 22, 2026 IGI Report No LG784606160 CUT CORNERED RECT. MODIFIED BRILLIANT 4.16 CARATS E VS 1 66% 68% Medium to Slightly Thick Pointed EXCELLENT EXCELLENT NONE NONE IGI LG784606160 Comments: This Laboratory Grown Diamond was created by Chemical Vapor Deposition (CVD) growth process. Type IIa