



March 24, 2026
IGI Report Number LG784621548
ROUND BRILLIANT
LABORATORY GROWN DIAMOND
4.62 - 4.65 X 2.83 MM
Carat Weight **0.37 CARAT**
Color Grade **D**
Clarity Grade **I.F.**
Cut Grade **IDEAL**
Polish **EXCELLENT**
Symmetry **EXCELLENT**
Fluorescence **NONE**
Inscription(s) **IGI LG784621548**

LABORATORY GROWN DIAMOND REPORT

March 24, 2026
IGI Report Number **LG784621548**
Description **LABORATORY GROWN DIAMOND**
Shape and Cutting Style **ROUND BRILLIANT**
Measurements **4.62 - 4.65 X 2.83 MM**

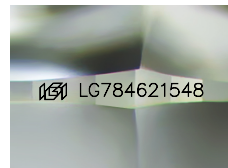
GRADING RESULTS

Carat Weight **0.37 CARAT**
Color Grade **D**
Clarity Grade **INTERNALLY FLAWLESS**
Cut Grade **IDEAL**

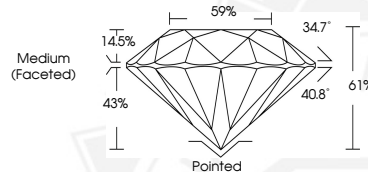
ADDITIONAL GRADING INFORMATION

Polish **EXCELLENT**
Symmetry **EXCELLENT**
Fluorescence **NONE**
Inscription(s) **IGI LG784621548**

Comments: This Laboratory Grown Diamond was created by Chemical Vapor Deposition (CVD) growth process. Type IIa



Sample Image Used



March 24, 2026
IGI Report Number LG784621548
ROUND BRILLIANT
LABORATORY GROWN DIAMOND
4.62 - 4.65 X 2.83 MM
Carat Weight **0.37 CARAT**
Color Grade **D**
Clarity Grade **I.F.**
Cut Grade **IDEAL**
Polish **EXCELLENT**
Symmetry **EXCELLENT**
Fluorescence **NONE**
Inscription(s) **IGI LG784621548**

Comments: This Laboratory Grown Diamond was created by Chemical Vapor Deposition (CVD) growth process. Type IIa

THIS DOCUMENT WAS PRODUCED WITH THE FOLLOWING SECURITY MEASURES: SPECIAL DOCUMENT PAPER, INK SCREENS, WATERMARK, BACKGROUND DESIGNS, HOLOGRAM AND OTHER SECURITY FEATURES NOT LISTED AND DO EXCEED DOCUMENT SECURITY INDUSTRY GUIDELINES.