



ELECTRONIC COPY

LG784629248
Report verification at igi.org



March 18, 2026

IGI Report Number **LG784629248**

Description **LABORATORY GROWN DIAMOND**

Shape and Cutting Style **ROUND BRILLIANT**

Measurements **7.42 - 7.45 X 4.59 MM**

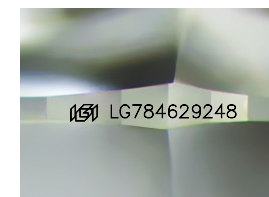
GRADING RESULTS

Carat Weight **1.52 CARAT**

Color Grade **E**

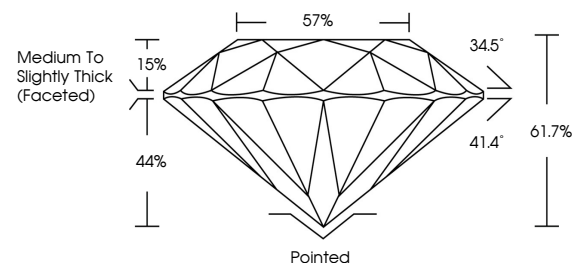
Clarity Grade **VS 1**

Cut Grade **IDEAL**

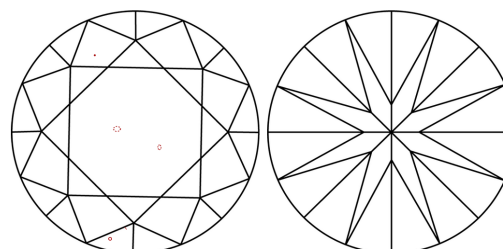


Sample Image Used

PROPORTIONS



CLARITY CHARACTERISTICS



KEY TO SYMBOLS

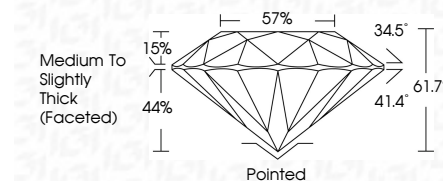
Red symbols indicate internal characteristics.
Green symbols indicate external characteristics.

COLOR

D E F G H I J Faint Very Light Light

CLARITY

FL	IF	VS ¹⁻²	VS ¹⁻²	SI ¹⁻²	I ¹⁻³
Flawless	Internally Flawless	Very Very Slightly Included	Very Slightly Included	Slightly Included	Included



ADDITIONAL GRADING INFORMATION

Polish **EXCELLENT**

Symmetry **EXCELLENT**

Fluorescence **NONE**

Inscription(s) **IGI LG784629248**

Comments: This Laboratory Grown Diamond was created by Chemical Vapor Deposition (CVD) growth process. Type IIa



IGI



March 18, 2026
IGI Report No LG784629248
ROUND BRILLIANT

1.52 CARAT
E

7.42 - 7.45 X 4.59 MM
Color Grade
VS 1
IDEAL
61.7%
57%
Medium To Slightly Thick (Faceted)

Pointed
EXCELLENT
EXCELLENT
NONE
NONE

IGI LG784629248

Comments: This Laboratory Grown Diamond was created by Chemical Vapor Deposition (CVD) growth process. Type IIa