



March 20, 2026

IGI Report Number **LG784629332**

OVAL BRILLIANT

LABORATORY GROWN DIAMOND

7.77 X 5.69 X 3.48 MM

Carat Weight **0.97 CARAT**

Color Grade **E**

Clarity Grade **SI 1**

Polish **EXCELLENT**

Symmetry **EXCELLENT**

Fluorescence **NONE**

Inscription(s) **IGI LG784629332**

Comments: This Laboratory Grown Diamond was created by Chemical Vapor Deposition (CVD) growth process. Type IIa

LABORATORY GROWN DIAMOND REPORT

March 20, 2026

IGI Report Number

LG784629332

Description

LABORATORY GROWN DIAMOND

Shape and Cutting Style

OVAL BRILLIANT

Measurements

7.77 X 5.69 X 3.48 MM

GRADING RESULTS

Carat Weight

0.97 CARAT

Color Grade

E

Clarity Grade

SI 1

ADDITIONAL GRADING INFORMATION

Polish

EXCELLENT

Symmetry

EXCELLENT

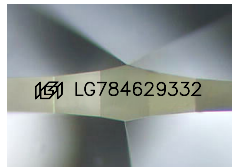
Fluorescence

NONE

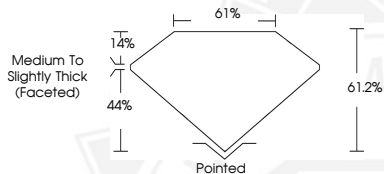
Inscription(s)

IGI LG784629332

Comments: This Laboratory Grown Diamond was created by Chemical Vapor Deposition (CVD) growth process. Type IIa



Sample Image Used



March 20, 2026

IGI Report Number **LG784629332**

OVAL BRILLIANT

LABORATORY GROWN DIAMOND

7.77 X 5.69 X 3.48 MM

Carat Weight **0.97 CARAT**

Color Grade **E**

Clarity Grade **SI 1**

Polish **EXCELLENT**

Symmetry **EXCELLENT**

Fluorescence **NONE**

Inscription(s) **IGI LG784629332**

Comments: This Laboratory Grown Diamond was created by Chemical Vapor Deposition (CVD) growth process. Type IIa



THIS DOCUMENT WAS PRODUCED WITH THE FOLLOWING SECURITY MEASURES: SPECIAL DOCUMENT PAPER, INK SCREENS, WATERMARK, BACKGROUND DESIGNS, HOLOGRAM AND OTHER SECURITY FEATURES NOT LISTED AND DO EXCEED DOCUMENT SECURITY INDUSTRY GUIDELINES.