



**ELECTRONIC COPY**

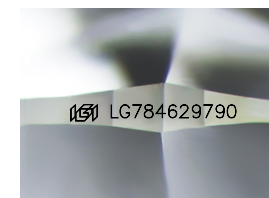
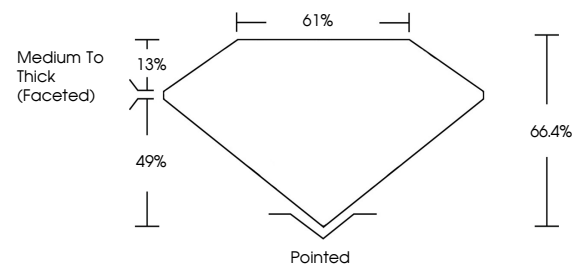
LG784629790  
Report verification at igi.org



March 22, 2026  
IGI Report Number **LG784629790**  
Description **LABORATORY GROWN DIAMOND**  
Shape and Cutting Style **SQUARE CUSHION MODIFIED BRILLIANT**  
Measurements **8.00 X 7.82 X 5.19 MM**  
**GRADING RESULTS**  
Carat Weight **2.44 CARATS**  
Color Grade **D**  
Clarity Grade **VVS 2**

March 22, 2026  
IGI Report Number **LG784629790**  
Description **LABORATORY GROWN DIAMOND**  
Shape and Cutting Style **SQUARE CUSHION MODIFIED BRILLIANT**  
Measurements **8.00 X 7.82 X 5.19 MM**

**PROPORTIONS**

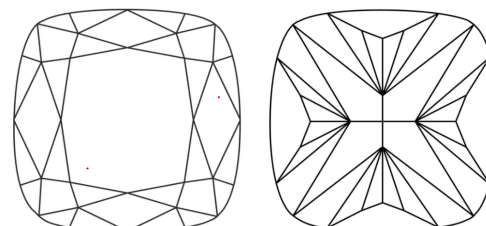


Sample Image Used

**GRADING RESULTS**

Carat Weight **2.44 CARATS**  
Color Grade **D**  
Clarity Grade **VVS 2**

**CLARITY CHARACTERISTICS**



**KEY TO SYMBOLS**

Red symbols indicate internal characteristics.  
Green symbols indicate external characteristics.

**ADDITIONAL GRADING INFORMATION**

Polish **EXCELLENT**  
Symmetry **EXCELLENT**  
Fluorescence **NONE**  
Inscription(s) **IGI LG784629790**

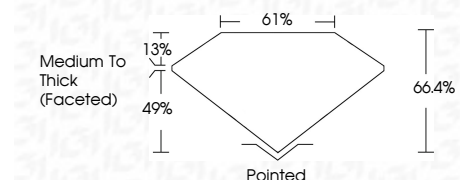
Comments: This Laboratory Grown Diamond was created by Chemical Vapor Deposition (CVD) growth process.  
Type IIa

**COLOR**

D E F G H I J Faint Very Light Light

**CLARITY**

FL	IF	VVS <sup>1-2</sup>	VS <sup>1-2</sup>	SI <sup>1-2</sup>	I <sup>1-3</sup>
Flawless	Internally Flawless	Very Very Slightly Included	Very Slightly Included	Slightly Included	Included



**ADDITIONAL GRADING INFORMATION**

Polish **EXCELLENT**  
Symmetry **EXCELLENT**  
Fluorescence **NONE**  
Inscription(s) **IGI LG784629790**  
Comments: This Laboratory Grown Diamond was created by Chemical Vapor Deposition (CVD) growth process.  
Type IIa



March 22, 2026  
IGI Report No **LG784629790**  
**SQUARE CUSHION MODIFIED BRILLIANT**  
**8.00 X 7.82 X 5.19 MM**  
Carat Weight **2.44 CARATS**  
Color Grade **D**  
Clarity Grade **VVS 2**  
Depth **66.4%**  
Table **61%**  
Girdle **Medium To Thick (Faceted)**  
Culet **Pointed**  
Polish **EXCELLENT**  
Symmetry **EXCELLENT**  
Fluorescence **NONE**  
Inscription(s) **IGI LG784629790**  
Comments: This Laboratory Grown Diamond was created by Chemical Vapor Deposition (CVD) growth process.  
Type IIa