



**ELECTRONIC COPY**

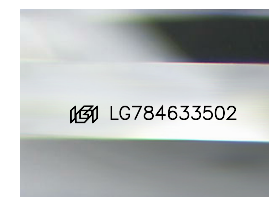
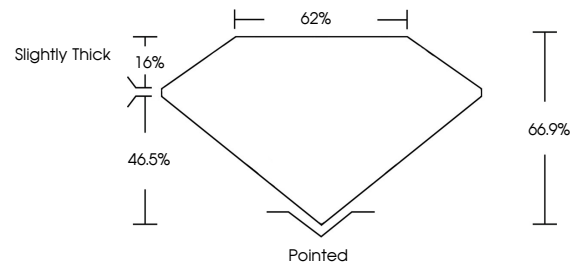
LG784633502  
Report verification at igi.org



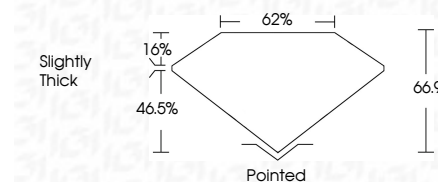
March 24, 2026  
IGI Report Number **LG784633502**  
Description **LABORATORY GROWN DIAMOND**  
Shape and Cutting Style **CUT CORNERED  
RECTANGULAR MODIFIED  
BRILLIANT**  
Measurements **10.42 X 7.06 X 4.72 MM**  
**GRADING RESULTS**  
Carat Weight **3.03 CARATS**  
Color Grade **FANCY INTENSE ORANGY  
PINK**  
Clarity Grade **VS 1**

March 24, 2026  
IGI Report Number **LG784633502**  
Description **LABORATORY GROWN DIAMOND**  
Shape and Cutting Style **CUT CORNERED RECTANGULAR  
MODIFIED BRILLIANT**  
Measurements **10.42 X 7.06 X 4.72 MM**  
**GRADING RESULTS**  
Carat Weight **3.03 CARATS**  
Color Grade **FANCY INTENSE ORANGY  
PINK**  
Clarity Grade **VS 1**

**PROPORTIONS**



Sample Image Used



**ADDITIONAL GRADING INFORMATION**

Polish **EXCELLENT**  
Symmetry **EXCELLENT**  
Fluorescence **SLIGHT**  
Inscription(s) **IGI LG784633502**

Comments: This Laboratory Grown Diamond was created by Chemical Vapor Deposition (CVD) growth process.  
Indications of post-growth treatment.

**ADDITIONAL GRADING INFORMATION**

Polish **EXCELLENT**  
Symmetry **EXCELLENT**  
Fluorescence **SLIGHT**  
Inscription(s) **IGI LG784633502**  
Comments: This Laboratory Grown Diamond was created by Chemical Vapor Deposition (CVD) growth process.  
Indications of post-growth treatment.

**COLOR**

D E F G H I J Faint Very Light Light

**CLARITY**

FL	IF	VS <sup>1-2</sup>	VS <sup>1-2</sup>	SI <sup>1-2</sup>	I <sup>1-3</sup>
Flawless	Internally Flawless	Very Very Slightly Included	Very Slightly Included	Slightly Included	Included



**IGI**



March 24, 2026  
IGI Report No LG784633502  
CUT CORNERED RECT. MODIFIED BRILLIANT  
10.42 X 7.06 X 4.72 MM  
3.03 CARATS  
Carat Weight  
Color Grade  
FANCY INTENSE ORANGY PINK  
Clarity Grade  
VS 1  
66.9%  
62%  
Slightly Thick  
Pointed  
Culet  
Polish  
EXCELLENT  
Symmetry  
EXCELLENT  
Fluorescence  
SLIGHT  
Inscription(s)  
IGI LG784633502  
Comments: This Laboratory Grown Diamond was created by Chemical Vapor Deposition (CVD) growth process.  
Indications of post-growth treatment.