



LABORATORY GROWN DIAMOND REPORT

April 2, 2026
 IGI Report Number **LG784633930**
 Description **LABORATORY GROWN DIAMOND**
 Shape and Cutting Style **HEART BRILLIANT**
 Measurements **5.07 X 5.67 X 3.33 MM**

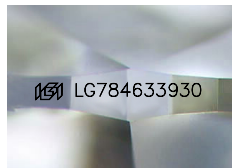
GRADING RESULTS

Carat Weight **0.58 CARAT**
 Color Grade **G**
 Clarity Grade **SI 1**

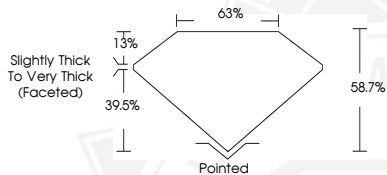
ADDITIONAL GRADING INFORMATION

Polish **VERY GOOD**
 Symmetry **EXCELLENT**
 Fluorescence **NONE**
 Inscription(s) **IGI LG784633930**

Comments: This Laboratory Grown Diamond was created by Chemical Vapor Deposition (CVD) growth process. Type IIa



Sample Image Used



April 2, 2026
 IGI Report Number **LG784633930**
HEART BRILLIANT
LABORATORY GROWN DIAMOND
5.07 X 5.67 X 3.33 MM
 Carat Weight **0.58 CARAT**
 Color Grade **G**
 Clarity Grade **SI 1**
 Polish **VERY GOOD**
 Symmetry **EXCELLENT**
 Fluorescence **NONE**
 Inscription(s) **IGI LG784633930**

Comments: This Laboratory Grown Diamond was created by Chemical Vapor Deposition (CVD) growth process. Type IIa



April 2, 2026
 IGI Report Number **LG784633930**
HEART BRILLIANT
LABORATORY GROWN DIAMOND
5.07 X 5.67 X 3.33 MM
 Carat Weight **0.58 CARAT**
 Color Grade **G**
 Clarity Grade **SI 1**
 Polish **VERY GOOD**
 Symmetry **EXCELLENT**
 Fluorescence **NONE**
 Inscription(s) **IGI LG784633930**

Comments: This Laboratory Grown Diamond was created by Chemical Vapor Deposition (CVD) growth process. Type IIa



THIS DOCUMENT WAS PRODUCED WITH THE FOLLOWING SECURITY MEASURES: SPECIAL DOCUMENT PAPER, INK SCREENS, WATERMARK, BACKGROUND DESIGNS, HOLOGRAM AND OTHER SECURITY FEATURES NOT LISTED AND DO EXCEED DOCUMENT SECURITY INDUSTRY GUIDELINES.