



ELECTRONIC COPY

LG784645854
Report verification at igi.org



April 28, 2026
IGI Report Number LG784645854
Description LABORATORY GROWN DIAMOND
Shape and Cutting Style SQUARE CUSHION MODIFIED BRILLIANT
Measurements 8.32 X 8.25 X 5.42 MM
GRADING RESULTS
Carat Weight 2.90 CARATS
Color Grade D
Clarity Grade FLAWLESS

LABORATORY GROWN DIAMOND REPORT

April 28, 2026
IGI Report Number LG784645854
Description LABORATORY GROWN DIAMOND
Shape and Cutting Style SQUARE CUSHION MODIFIED BRILLIANT
Measurements 8.32 X 8.25 X 5.42 MM

GRADING RESULTS

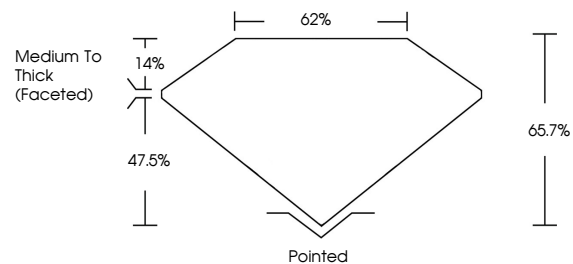
Carat Weight 2.90 CARATS
Color Grade D
Clarity Grade FLAWLESS

ADDITIONAL GRADING INFORMATION

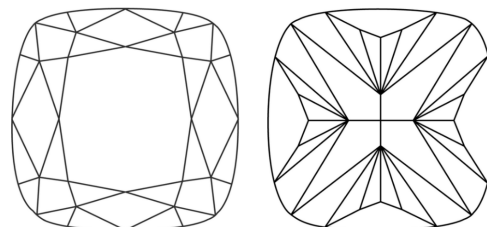
Polish EXCELLENT
Symmetry EXCELLENT
Fluorescence NONE
Inscription(s) LG784645854

Comments: As Grown - No indication of post-growth treatment.
This Laboratory Grown Diamond was created by High Pressure High Temperature (HPHT) growth process.
Type II

PROPORTIONS

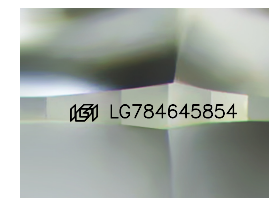


CLARITY CHARACTERISTICS



KEY TO SYMBOLS

Red symbols indicate internal characteristics.
Green symbols indicate external characteristics.



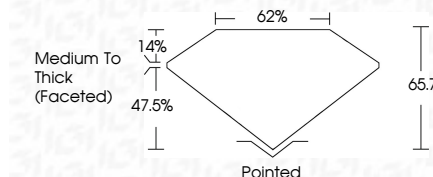
Sample Image Used

COLOR

D E F G H I J Faint Very Light Light

CLARITY

Table with columns: FL, IF, VS 1-2, VS 1-2, SI 1-2, I 1-3 and corresponding descriptions: Flawless, Internally Flawless, Very Very Slightly Included, Very Slightly Included, Slightly Included, Included



ADDITIONAL GRADING INFORMATION

Polish EXCELLENT
Symmetry EXCELLENT
Fluorescence NONE
Inscription(s) LG784645854
Comments: As Grown - No indication of post-growth treatment.
This Laboratory Grown Diamond was created by High Pressure High Temperature (HPHT) growth process.
Type II



April 28, 2026
IGI Report No LG784645854
SQUARE CUSHION MODIFIED BRILLIANT
2.90 CARATS
D
2.90 CARATS
FLAWLESS
65.7%
62%
Medium To Thick (Faceted)
Pointed
EXCELLENT
EXCELLENT
NONE
LG784645854

Comments: As Grown - No indication of post-growth treatment.
This Laboratory Grown Diamond was created by High Pressure High Temperature (HPHT) growth process.
Type II