



**ELECTRONIC COPY**

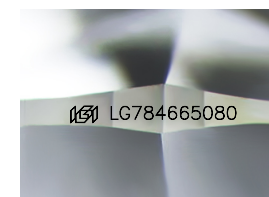
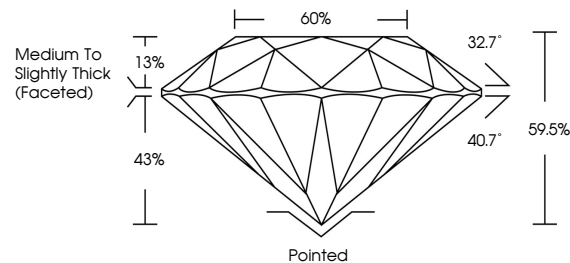
LG784665080  
Report verification at [igi.org](http://igi.org)



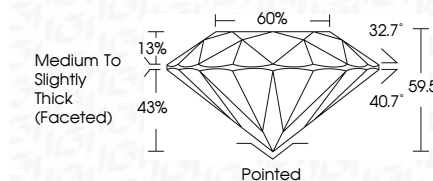
March 25, 2026  
IGI Report Number **LG784665080**  
Description **LABORATORY GROWN DIAMOND**  
Shape and Cutting Style **ROUND BRILLIANT**  
Measurements **7.42 - 7.48 X 4.43 MM**  
**GRADING RESULTS**  
Carat Weight **1.52 CARAT**  
Color Grade **J**  
Clarity Grade **VS 1**  
Cut Grade **EXCELLENT**

March 25, 2026  
IGI Report Number **LG784665080**  
Description **LABORATORY GROWN DIAMOND**  
Shape and Cutting Style **ROUND BRILLIANT**  
Measurements **7.42 - 7.48 X 4.43 MM**  
**GRADING RESULTS**  
Carat Weight **1.52 CARAT**  
Color Grade **J**  
Clarity Grade **VS 1**  
Cut Grade **EXCELLENT**

**PROPORTIONS**



Sample Image Used



**ADDITIONAL GRADING INFORMATION**

Polish **EXCELLENT**  
Symmetry **EXCELLENT**  
Fluorescence **NONE**  
Inscription(s) **IGI LG784665080**

Comments: This Laboratory Grown Diamond was created by Chemical Vapor Deposition (CVD) growth process. Type IIa

**ADDITIONAL GRADING INFORMATION**

Polish **EXCELLENT**  
Symmetry **EXCELLENT**  
Fluorescence **NONE**  
Inscription(s) **IGI LG784665080**  
Comments: This Laboratory Grown Diamond was created by Chemical Vapor Deposition (CVD) growth process. Type IIa

**COLOR**

D E F G H I J Faint Very Light Light

**CLARITY**

FL	IF	VS <sup>1-2</sup>	VS <sup>1-2</sup>	SI <sup>1-2</sup>	I <sup>1-3</sup>
Flawless	Internally Flawless	Very Very Slightly Included	Very Slightly Included	Slightly Included	Included



**IGI**



March 25, 2026  
IGI Report No LG784665080  
**ROUND BRILLIANT**  
7.42 - 7.48 X 4.43 MM  
Carat Weight **1.52 CARAT**  
Color Grade **J**  
Clarity Grade **VS 1**  
Cut Grade **EXCELLENT**  
Depth **59.5%**  
Table **60%**  
Girdle **Medium To Slightly Thick (Faceted)**  
Culet **Pointed**  
Polish **EXCELLENT**  
Symmetry **EXCELLENT**  
Fluorescence **NONE**  
Inscriptions(s) **IGI LG784665080**  
Comments: This Laboratory Grown Diamond was created by Chemical Vapor Deposition (CVD) growth process. Type IIa