



ELECTRONIC COPY

LG784668178
Report verification at igi.org

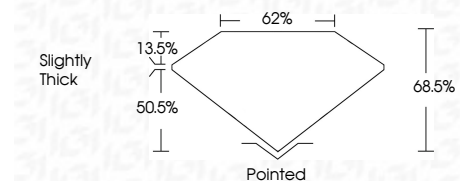


March 21, 2026
IGI Report Number **LG784668178**
Description **LABORATORY GROWN DIAMOND**
Shape and Cutting Style **CUT CORNERED
RECTANGULAR MODIFIED
BRILLIANT**

Measurements **10.61 X 7.53 X 5.16 MM**

GRADING RESULTS

Carat Weight **3.55 CARATS**
Color Grade **F**
Clarity Grade **VVS 2**



ADDITIONAL GRADING INFORMATION

Polish **EXCELLENT**
Symmetry **EXCELLENT**
Fluorescence **NONE**
Inscription(s) **IGI LG784668178**
Comments: This Laboratory Grown Diamond was created by Chemical Vapor Deposition (CVD) growth process. Type IIa



March 21, 2026
IGI Report No LG784668178
CUT CORNERED RECT. MODIFIED BRILLIANT
10.61 X 7.53 X 5.16 MM
3.55 CARATS
F
VVS 2
68.5%
50.5%
13.5%
Slightly Thick
Pointed
EXCELLENT
EXCELLENT
NONE
IGI LG784668178
Comments: This Laboratory Grown Diamond was created by Chemical Vapor Deposition (CVD) growth process. Type IIa

LABORATORY GROWN DIAMOND REPORT

March 21, 2026
IGI Report Number **LG784668178**
Description **LABORATORY GROWN DIAMOND**
Shape and Cutting Style **CUT CORNERED RECTANGULAR
MODIFIED BRILLIANT**
Measurements **10.61 X 7.53 X 5.16 MM**

GRADING RESULTS

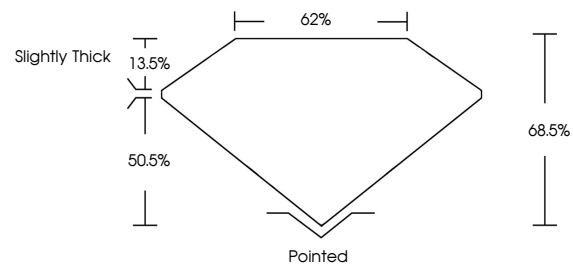
Carat Weight **3.55 CARATS**
Color Grade **F**
Clarity Grade **VVS 2**

ADDITIONAL GRADING INFORMATION

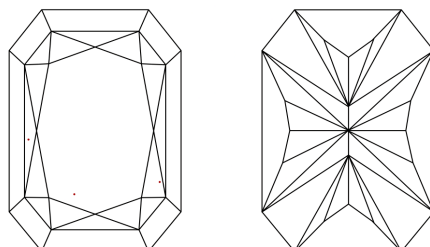
Polish **EXCELLENT**
Symmetry **EXCELLENT**
Fluorescence **NONE**
Inscription(s) **IGI LG784668178**

Comments: This Laboratory Grown Diamond was created by Chemical Vapor Deposition (CVD) growth process. Type IIa

PROPORTIONS

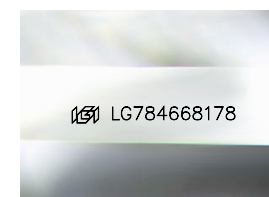


CLARITY CHARACTERISTICS



KEY TO SYMBOLS

Red symbols indicate internal characteristics.
Green symbols indicate external characteristics.



Sample Image Used

COLOR

D E F G H I J Faint Very Light Light

CLARITY

FL	IF	VVS ¹⁻²	VS ¹⁻²	SI ¹⁻²	I ¹⁻³
Flawless	Internally Flawless	Very Very Slightly Included	Very Slightly Included	Slightly Included	Included

