



**ELECTRONIC COPY**

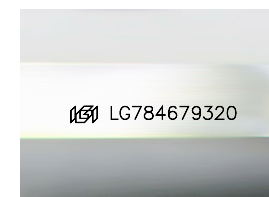
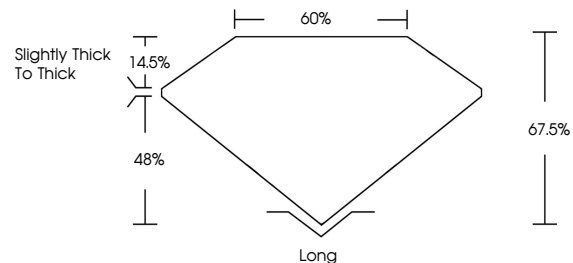
LG784679320  
Report verification at igi.org



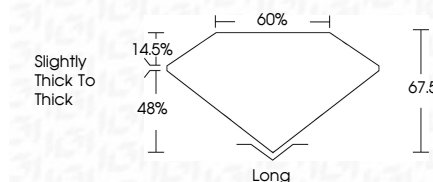
March 30, 2026  
IGI Report Number **LG784679320**  
Description **LABORATORY GROWN DIAMOND**  
Shape and Cutting Style **EMERALD CUT**  
Measurements **7.36 X 5.26 X 3.55 MM**  
**GRADING RESULTS**  
Carat Weight **1.34 CARAT**  
Color Grade **FANCY VIVID BLUE**  
Clarity Grade **VS 1**

March 30, 2026  
IGI Report Number **LG784679320**  
Description **LABORATORY GROWN DIAMOND**  
Shape and Cutting Style **EMERALD CUT**  
Measurements **7.36 X 5.26 X 3.55 MM**  
**GRADING RESULTS**  
Carat Weight **1.34 CARAT**  
Color Grade **FANCY VIVID BLUE**  
Clarity Grade **VS 1**

**PROPORTIONS**



Sample Image Used



**ADDITIONAL GRADING INFORMATION**

Polish **EXCELLENT**  
Symmetry **EXCELLENT**  
Fluorescence **NONE**  
Inscription(s) **IGI LG784679320**

Comments: This Laboratory Grown Diamond was created by Chemical Vapor Deposition (CVD) growth process. Indications of post-growth treatment.

**ADDITIONAL GRADING INFORMATION**

Polish **EXCELLENT**  
Symmetry **EXCELLENT**  
Fluorescence **NONE**  
Inscription(s) **IGI LG784679320**

Comments: This Laboratory Grown Diamond was created by Chemical Vapor Deposition (CVD) growth process. Indications of post-growth treatment.

**COLOR**

D E F G H I J Faint Very Light Light

**CLARITY**

FL	IF	VS <sup>1-2</sup>	VS <sup>1-2</sup>	SI <sup>1-2</sup>	I <sup>1-3</sup>
Flawless	Internally Flawless	Very Very Slightly Included	Very Slightly Included	Slightly Included	Included



**IGI**



March 30, 2026  
IGI Report No **LG784679320**  
**EMERALD CUT**  
1.34 CARAT  
Carat Weight **7.36 X 5.26 X 3.55 MM**  
Color Grade **FANCY VIVID BLUE**  
Clarity Grade **VS 1**  
Table **60%**  
Girdle **Slightly Thick To Thick**  
Culet **Long**  
Polish **EXCELLENT**  
Symmetry **EXCELLENT**  
Fluorescence **NONE**  
Inscription(s) **IGI LG784679320**  
Comments: This Laboratory Grown Diamond was created by Chemical Vapor Deposition (CVD) growth process. Indications of post-growth treatment.