



ELECTRONIC COPY

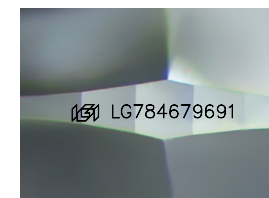
LG784679691
Report verification at igi.org



March 23, 2026
IGI Report Number LG784679691
Description LABORATORY GROWN DIAMOND
Shape and Cutting Style ROUND BRILLIANT
Measurements 9.30 - 9.39 X 5.72 MM

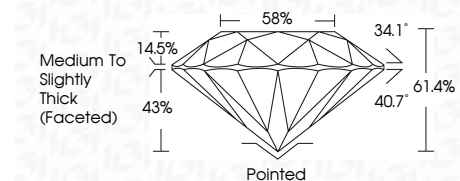
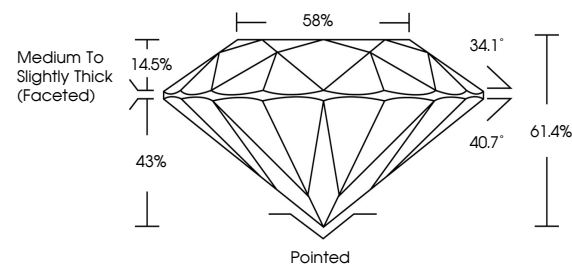
GRADING RESULTS

Carat Weight 3.07 CARATS
Color Grade E
Clarity Grade VS 1
Cut Grade IDEAL

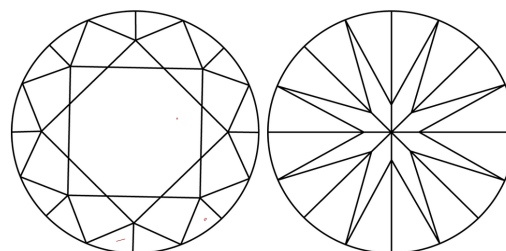


Sample Image Used

PROPORTIONS



CLARITY CHARACTERISTICS



KEY TO SYMBOLS

Red symbols indicate internal characteristics.
Green symbols indicate external characteristics.

COLOR

D E F G H I J Faint Very Light Light

CLARITY

FL IF VS 1-2 VS 2-3 SI 1-2 I 1-3
Flawless Internally Flawless Very Very Slightly Included Very Slightly Included Slightly Included Included

ADDITIONAL GRADING INFORMATION

Polish EXCELLENT
Symmetry EXCELLENT
Fluorescence NONE
Inscription(s) (IGI) LG784679691
Comments: This Laboratory Grown Diamond was created by Chemical Vapor Deposition (CVD) growth process. Type IIa



March 23, 2026
IGI Report No LG784679691
ROUND BRILLIANT
9.30 - 9.39 X 5.72 MM
3.07 CARATS E
Color Grade VS 1 IDEAL
Clarity Grade VS 1 IDEAL
Depth 61.4%
Table 58%
Medium To Slightly Thick (Faceted)
Cutler Pointed EXCELLENT
Polish EXCELLENT
Symmetry EXCELLENT
Fluorescence NONE
Inscription(s) (IGI) LG784679691
Comments: This Laboratory Grown Diamond was created by Chemical Vapor Deposition (CVD) growth process. Type IIa