



**ELECTRONIC COPY**

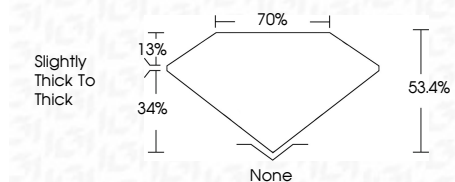
LG784679898  
Report verification at igi.org



March 20, 2026  
IGI Report Number **LG784679898**  
Description **LABORATORY GROWN DIAMOND**  
Shape and Cutting Style **MODIFIED PEAR STEP CUT**  
Measurements **9.63 X 5.66 X 3.02 MM**

**GRADING RESULTS**

Carat Weight **1.04 CARAT**  
Color Grade **E**  
Clarity Grade **VVS 2**

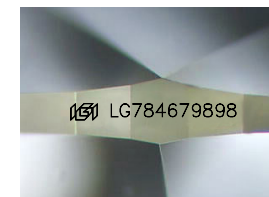


**ADDITIONAL GRADING INFORMATION**

Polish **EXCELLENT**  
Symmetry **EXCELLENT**  
Fluorescence **NONE**  
Inscription(s) **IGI LG784679898**  
Comments: This Laboratory Grown Diamond was created by Chemical Vapor Deposition (CVD) growth process. Type IIa

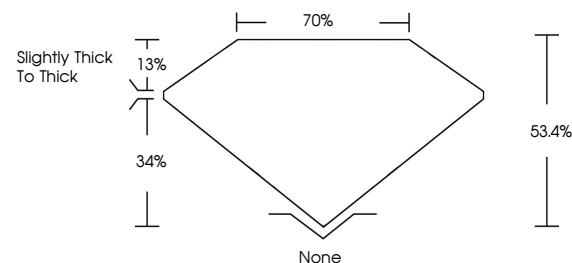


March 20, 2026  
IGI Report No LG784679898  
**MODIFIED PEAR STEP CUT**  
9.63 X 5.66 X 3.02 MM  
1.04 CARAT  
Color Grade **E**  
Clarity Grade **VVS 2**  
Depth **53.4%**  
Table **70%**  
Girdle **Slightly Thick To Thick**  
Culet **None**  
Polish **EXCELLENT**  
Symmetry **EXCELLENT**  
Fluorescence **NONE**  
Inscription(s) **IGI LG784679898**  
Comments: This Laboratory Grown Diamond was created by Chemical Vapor Deposition (CVD) growth process. Type IIa

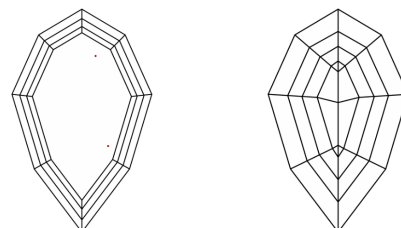


Sample Image Used

**PROPORTIONS**



**CLARITY CHARACTERISTICS**



**KEY TO SYMBOLS**

Red symbols indicate internal characteristics.  
Green symbols indicate external characteristics.

**COLOR**

D E F G H I J Faint Very Light Light

**CLARITY**

FL	IF	VVS <sup>1-2</sup>	VS <sup>1-2</sup>	SI <sup>1-2</sup>	I <sup>1-3</sup>
Flawless	Internally Flawless	Very Very Slightly Included	Very Slightly Included	Slightly Included	Included

