



ELECTRONIC COPY

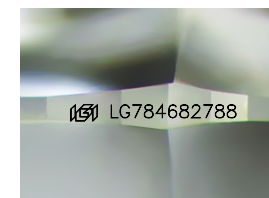
LG784682788
Report verification at igi.org



March 23, 2026
IGI Report Number LG784682788
Description LABORATORY GROWN DIAMOND
Shape and Cutting Style ROUND BRILLIANT
Measurements 7.44 - 7.50 X 4.44 MM

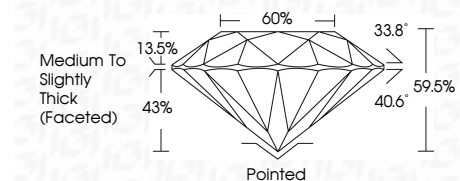
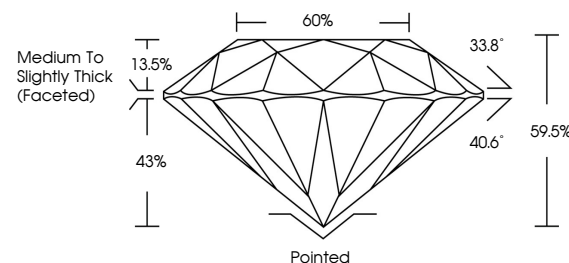
GRADING RESULTS

Carat Weight 1.52 CARAT
Color Grade E
Clarity Grade VVS 2
Cut Grade IDEAL

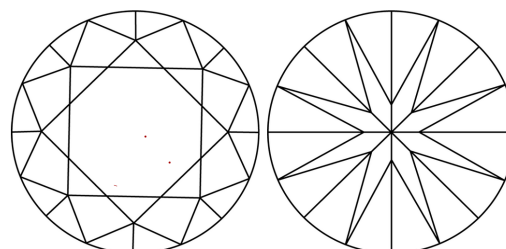


Sample Image Used

PROPORTIONS



CLARITY CHARACTERISTICS



KEY TO SYMBOLS

Red symbols indicate internal characteristics.
Green symbols indicate external characteristics.

COLOR

D E F G H I J Faint Very Light Light

CLARITY

FL IF VVS 1-2 VS 1-2 SI 1-2 I 1-3
Flawless Internally Flawless Very Very Slightly Included Very Slightly Included Slightly Included Included

ADDITIONAL GRADING INFORMATION

Polish EXCELLENT
Symmetry EXCELLENT
Fluorescence NONE
Inscription(s) (IGI) LG784682788
Comments: This Laboratory Grown Diamond was created by Chemical Vapor Deposition (CVD) growth process. Type IIa



IGI



March 23, 2026
IGI Report No LG784682788
ROUND BRILLIANT
7.44 - 7.50 X 4.44 MM
1.52 CARAT E
Color Grade VVS 2 IDEAL
Clarity Grade VVS 2 IDEAL
Depth 59.5%
Table 65%
Girdle Medium To Slightly Thick (Faceted)
Culet Pointed
Polish EXCELLENT
Symmetry EXCELLENT
Fluorescence NONE
Inscription(s) (IGI) LG784682788
Comments: This Laboratory Grown Diamond was created by Chemical Vapor Deposition (CVD) growth process. Type IIa