



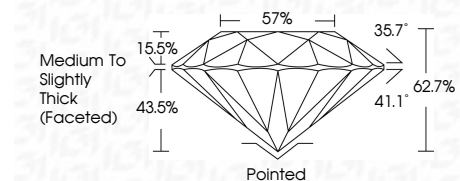
ELECTRONIC COPY

LG784693228 Report verification at igi.org



March 23, 2026 IGI Report Number LG784693228 Description LABORATORY GROWN DIAMOND Shape and Cutting Style ROUND BRILLIANT Measurements 7.10 - 7.15 X 4.47 MM

GRADING RESULTS Carat Weight 1.39 CARAT Color Grade E Clarity Grade VS 1 Cut Grade EXCELLENT



ADDITIONAL GRADING INFORMATION Polish EXCELLENT Symmetry EXCELLENT Fluorescence NONE Inscription(s) LG784693228 Comments: This Laboratory Grown Diamond was created by Chemical Vapor Deposition (CVD) growth process. Type IIa



March 23, 2026 IGI Report No LG784693228 ROUND BRILLIANT 1.39 CARAT E VS 1 EXCELLENT 62.7% 57% Medium To Slightly Thick (Faceted) Pointed EXCELLENT EXCELLENT NONE NONE LG784693228 Comments: This Laboratory Grown Diamond was created by Chemical Vapor Deposition (CVD) growth process. Type IIa

LABORATORY GROWN DIAMOND REPORT

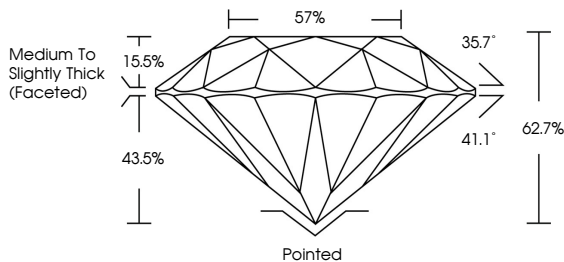
March 23, 2026 IGI Report Number LG784693228 Description LABORATORY GROWN DIAMOND Shape and Cutting Style ROUND BRILLIANT Measurements 7.10 - 7.15 X 4.47 MM

GRADING RESULTS Carat Weight 1.39 CARAT Color Grade E Clarity Grade VS 1 Cut Grade EXCELLENT

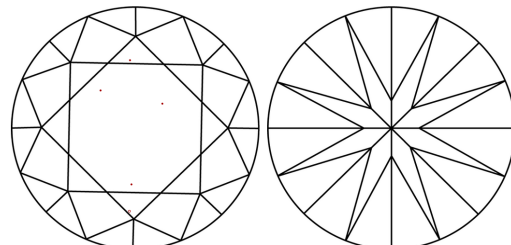
ADDITIONAL GRADING INFORMATION Polish EXCELLENT Symmetry EXCELLENT Fluorescence NONE Inscription(s) LG784693228

Comments: This Laboratory Grown Diamond was created by Chemical Vapor Deposition (CVD) growth process. Type IIa

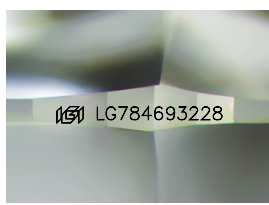
PROPORTIONS



CLARITY CHARACTERISTICS



KEY TO SYMBOLS Red symbols indicate internal characteristics. Green symbols indicate external characteristics.



Sample Image Used

Table with 10 columns: D, E, F, G, H, I, J, Faint, Very Light, Light

Table with 6 columns: FL, IF, VS 1-2, VS 1-2, SI 1-2, I 1-3

