



ELECTRONIC COPY

LG785610053
Report verification at igi.org

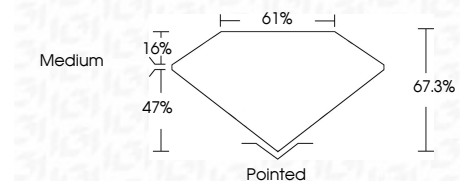


March 24, 2026
IGI Report Number LG785610053
Description LABORATORY GROWN DIAMOND
Shape and Cutting Style CUT CORNERED RECTANGULAR MODIFIED BRILLIANT

Measurements 11.23 X 7.30 X 4.91 MM

GRADING RESULTS

Carat Weight 3.55 CARATS
Color Grade E
Clarity Grade VS 1

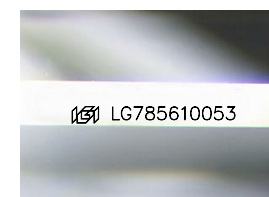


ADDITIONAL GRADING INFORMATION

Polish EXCELLENT
Symmetry EXCELLENT
Fluorescence NONE
Inscription(s) IGI LG785610053
Comments: This Laboratory Grown Diamond was created by Chemical Vapor Deposition (CVD) growth process. Type IIa

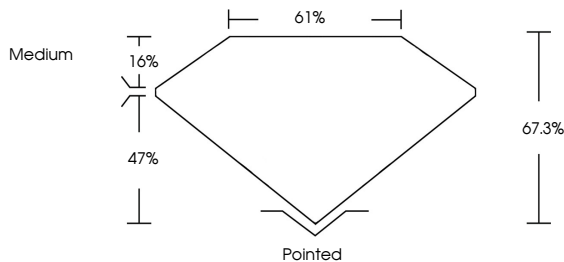


March 24, 2026
IGI Report No LG785610053
CUT CORNERED RECT. MODIFIED BRILLIANT
11.23 X 7.30 X 4.91 MM
3.55 CARATS
E
VS 1
67.3%
61%
Medium
Pointed
EXCELLENT
EXCELLENT
NONE
IGI LG785610053
Comments: This Laboratory Grown Diamond was created by Chemical Vapor Deposition (CVD) growth process. Type IIa

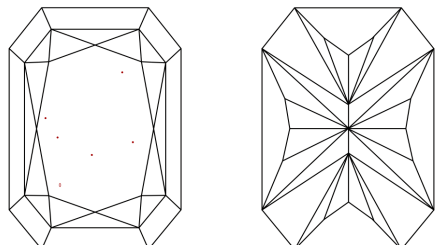


Sample Image Used

PROPORTIONS



CLARITY CHARACTERISTICS



KEY TO SYMBOLS

Red symbols indicate internal characteristics.
Green symbols indicate external characteristics.

COLOR

Table with color grades: D, E, F, G, H, I, J, Faint, Very Light, Light

CLARITY

Table with clarity grades: FL, IF, VS 1-2, VS 1-2, SI 1-2, I 1-3, Flawless, Internally Flawless, Very Very Slightly Included, Very Slightly Included, Slightly Included, Included

