



March 24, 2026

IGI Report Number LG785617206
ROUND BRILLIANT
LABORATORY GROWN DIAMOND
5.13 - 5.16 X 3.11 MM

0.50 CARAT
D
VVS 1
IDEAL
EXCELLENT
EXCELLENT
NONE
IGI LG785617206

Comments: As Grown - No indication of post-growth treatment. This Laboratory Grown Diamond was created by High Pressure High Temperature (HPHT) growth process. Type II

LABORATORY GROWN DIAMOND REPORT

March 24, 2026
IGI Report Number **LG785617206**
Description **LABORATORY GROWN DIAMOND**
Shape and Cutting Style **ROUND BRILLIANT**
Measurements **5.13 - 5.16 X 3.11 MM**

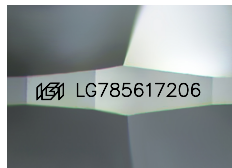
GRADING RESULTS

Carat Weight **0.50 CARAT**
Color Grade **D**
Clarity Grade **VVS 1**
Cut Grade **IDEAL**

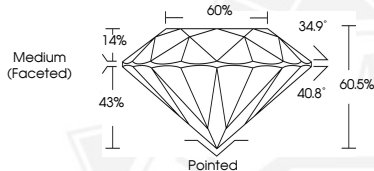
ADDITIONAL GRADING INFORMATION

Polish **EXCELLENT**
Symmetry **EXCELLENT**
Fluorescence **NONE**
Inscription(s) **IGI LG785617206**

Comments: As Grown - No indication of post-growth treatment. This Laboratory Grown Diamond was created by High Pressure High Temperature (HPHT) growth process. Type II



Sample Image Used



March 24, 2026

IGI Report Number LG785617206
ROUND BRILLIANT
LABORATORY GROWN DIAMOND
5.13 - 5.16 X 3.11 MM

0.50 CARAT
D
VVS 1
IDEAL
EXCELLENT
EXCELLENT
NONE
IGI LG785617206

Comments: As Grown - No indication of post-growth treatment. This Laboratory Grown Diamond was created by High Pressure High Temperature (HPHT) growth process. Type II



THIS DOCUMENT WAS PRODUCED WITH THE FOLLOWING SECURITY MEASURES: SPECIAL DOCUMENT PAPER, INK SCREENS, WATERMARK, BACKGROUND DESIGNS, HOLOGRAM AND OTHER SECURITY FEATURES NOT LISTED AND DO EXCEED DOCUMENT SECURITY INDUSTRY GUIDELINES.