



**INTERNATIONAL  
GEMOLOGICAL  
INSTITUTE**

**ELECTRONIC COPY**

**LABORATORY GROWN DIAMOND REPORT**

April 4, 2026  
IGI Report Number **LG786606838**  
Description **LABORATORY GROWN DIAMOND**  
Shape and Cutting Style **HEART MODIFIED BRILLIANT**  
Measurements **5.60 X 6.54 X 3.47 MM**

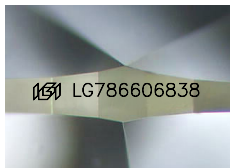
**GRADING RESULTS**

Carat Weight **0.98 CARAT**  
Color Grade **FANCY VIVID YELLOW**  
Clarity Grade **VS 2**

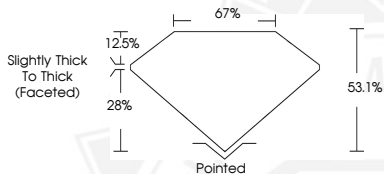
**ADDITIONAL GRADING INFORMATION**

Polish **VERY GOOD**  
Symmetry **VERY GOOD**  
Fluorescence **NONE**  
Inscription(s) **IGI LG786606838**

Comments: As Grown - No indication of post-growth treatment. This Laboratory Grown Diamond was created by High Pressure High Temperature (HPHT) growth process.



Sample Image Used



April 4, 2026  
IGI Report Number **LG786606838**  
**HEART MODIFIED BRILLIANT**  
**LABORATORY GROWN DIAMOND**  
**5.60 X 6.54 X 3.47 MM**  
Carat Weight **0.98 CARAT**  
Color Grade **FANCY VIVID YELLOW**  
Clarity Grade **VS 2**  
Polish **VERY GOOD**  
Symmetry **VERY GOOD**  
Fluorescence **NONE**  
Inscription(s) **IGI LG786606838**

Comments: As Grown - No indication of post-growth treatment. This Laboratory Grown Diamond was created by High Pressure High Temperature (HPHT) growth process.



April 4, 2026  
IGI Report Number **LG786606838**  
**HEART MODIFIED BRILLIANT**  
**LABORATORY GROWN DIAMOND**  
**5.60 X 6.54 X 3.47 MM**  
Carat Weight **0.98 CARAT**  
Color Grade **FANCY VIVID YELLOW**  
Clarity Grade **VS 2**  
Polish **VERY GOOD**  
Symmetry **VERY GOOD**  
Fluorescence **NONE**  
Inscription(s) **IGI LG786606838**

Comments: As Grown - No indication of post-growth treatment. This Laboratory Grown Diamond was created by High Pressure High Temperature (HPHT) growth process.



THIS DOCUMENT WAS PRODUCED WITH THE FOLLOWING SECURITY MEASURES: SPECIAL DOCUMENT PAPER, INK SCREENS, WATERMARK, BACKGROUND DESIGNS, HOLOGRAM AND OTHER SECURITY FEATURES NOT LISTED AND DO EXCEED DOCUMENT SECURITY INDUSTRY GUIDELINES.

For terms & conditions and to verify this report, please visit [www.igi.org](http://www.igi.org)