



**ELECTRONIC COPY**

LG786622610  
Report verification at igi.org



March 25, 2026  
IGI Report Number **LG786622610**  
Description **LABORATORY GROWN DIAMOND**  
Shape and Cutting Style **CUSHION MODIFIED BRILLIANT**  
Measurements **10.56 X 8.17 X 5.51 MM**  
**GRADING RESULTS**  
Carat Weight **3.58 CARATS**  
Color Grade **D**  
Clarity Grade **VS 1**

March 25, 2026  
IGI Report Number **LG786622610**  
Description **LABORATORY GROWN DIAMOND**  
Shape and Cutting Style **CUSHION MODIFIED BRILLIANT**  
Measurements **10.56 X 8.17 X 5.51 MM**

**GRADING RESULTS**

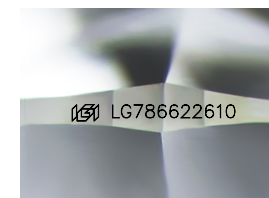
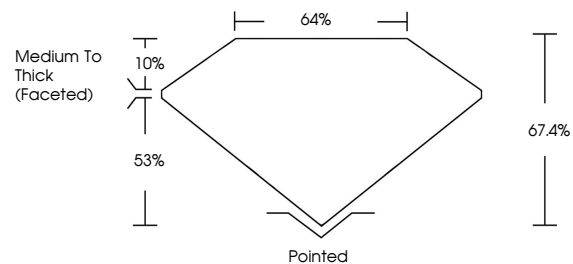
Carat Weight **3.58 CARATS**  
Color Grade **D**  
Clarity Grade **VS 1**

**ADDITIONAL GRADING INFORMATION**

Polish **EXCELLENT**  
Symmetry **EXCELLENT**  
Fluorescence **NONE**  
Inscription(s) **IGI LG786622610**

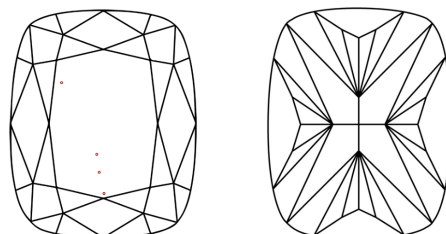
Comments: This Laboratory Grown Diamond was created by Chemical Vapor Deposition (CVD) growth process. Type IIa

**PROPORTIONS**



Sample Image Used

**CLARITY CHARACTERISTICS**



**KEY TO SYMBOLS**

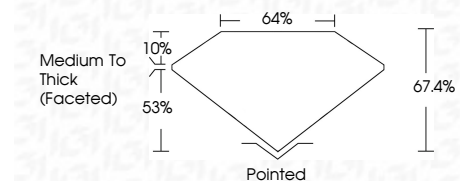
Red symbols indicate internal characteristics.  
Green symbols indicate external characteristics.

**COLOR**

D E F G H I J Faint Very Light Light

**CLARITY**

FL	IF	VS <sup>1-2</sup>	VS <sup>1-2</sup>	SI <sup>1-2</sup>	I <sup>1-3</sup>
Flawless	Internally Flawless	Very Very Slightly Included	Very Slightly Included	Slightly Included	Included



**ADDITIONAL GRADING INFORMATION**

Polish **EXCELLENT**  
Symmetry **EXCELLENT**  
Fluorescence **NONE**  
Inscription(s) **IGI LG786622610**  
Comments: This Laboratory Grown Diamond was created by Chemical Vapor Deposition (CVD) growth process. Type IIa



**IGI**



March 25, 2026  
IGI Report No **LG786622610**  
**CUSHION MODIFIED BRILLIANT**  
**10.56 X 8.17 X 5.51 MM**  
Carat Weight **3.58 CARATS**  
Color Grade **D**  
Clarity Grade **VS 1**  
Table **67.4%**  
Girdle **64%**  
Culet **Medium To Thick (Faceted)**  
Polish **Excellent**  
Symmetry **Excellent**  
Fluorescence **NONE**  
Inscription(s) **IGI LG786622610**

Comments: This Laboratory Grown Diamond was created by Chemical Vapor Deposition (CVD) growth process. Type IIa